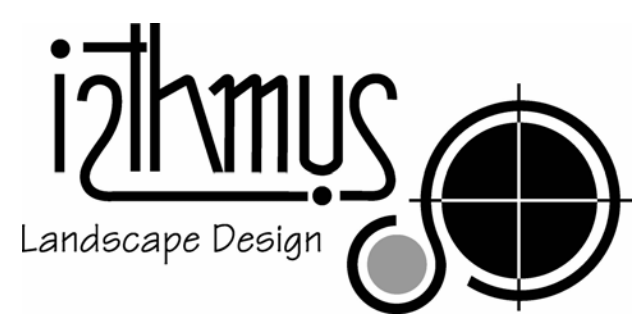


CHAPEL STREET PRECINCT, ROCKDALE buildings A & B



isthmus pty ltd ACN 107362149
 21 Central Avenue Como 2226
 Ph:+612 9528 4903 www.isthmus.com.au
 Email:landscape@isthmus.com.au

REV:	AMENDMENT:	INT:	DATE:	LANDSCAPE PLAN - BUILDINGS A & B		DWG: IS0268DA1
				SITE PLAN		ISSUE: B
				CHAPEL STREET PRECINCT, ROCKDALE 2216		
B	AUTHORITY APPROVAL	MW	01.05.20	DATE:	MAY 2020	
A	AUTHORITY APPROVAL	MW	17.10.19	SCALE:	1:200@A1 - 1:400@A3	



design statement

Ground floor streetscape design has been coordinated with the following:

- Rockdale Development Control Plan 2011
- Rockdale Technical Specification: Landscape
- The NSW Planning & Environment Apartment Design Guide 2015
- Part 4: Landscape Design (4O)
- Part 4: Planting on Structures (4P)
- Approved Landscape Plan and Masterplan as noted on Consent DA-2016/241/A

- The design intent of ground floor streetscape and open space and is to:
- provide substantive plantings to building setbacks
 - establish distinctive planting treatments to entry lobbies,
 - enhance proposed public domain improvements to Chapel Lane and Lister Avenue
 - provide cohesive planting theme consistent with greater 'Chapel Street Precinct'

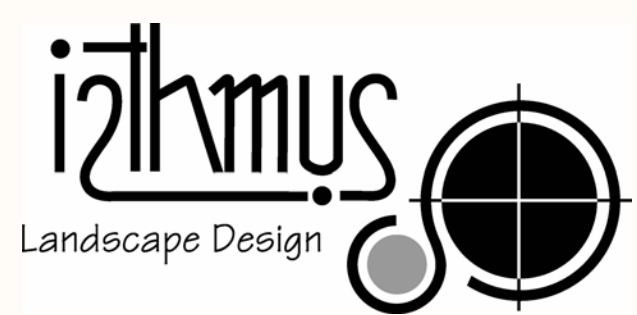
A mix of native and exotic groundcovers, accent plantings, screen shrubs and evergreen trees are proposed. A predominance of native species is proposed. Species are typically low maintenance and have low water requirements as per Sydney Water low water plant list. Planting design intent is to provide lush foliage with contrasting texture, colour and seasonal variation. Small and canopy tree species have been selected to allow for screening and to establish consistent site frontage planting theme. Species have been selected to be suitable to location and aspect. Distinct planting themes are provided to both common and private residential entries and frontages. Resident access is provided directly to public domain from ground floor units fronting Chapel Lane and Lister Avenue.

Planting areas provide a minimum soil depth of 600mm for accents and shrubs over and above required drainage and waterproofing and 800mm for small trees as per Apartment Design Guide 2015. A consolidated on-structure planting area is proposed within the site to allow for canopy and screen tree planting. Planter soil in this area will be mounded to achieve soil depth of 1000mm for large tree species. Trees proposed to this location have been selected due to their suitability for on-structure applications.

A step down in basement is provided to allow for deep soil tree planting to Building B frontage to Chapel Lane. Where step down is not provided on-structure planters are proposed to achieve required planter soil depths as per the Apartment Design Guide 2015.

All proposed plantings to Chapel Lane and Lister Avenue have been coordinated with approved 'Chapel Street Precinct' public domain works.

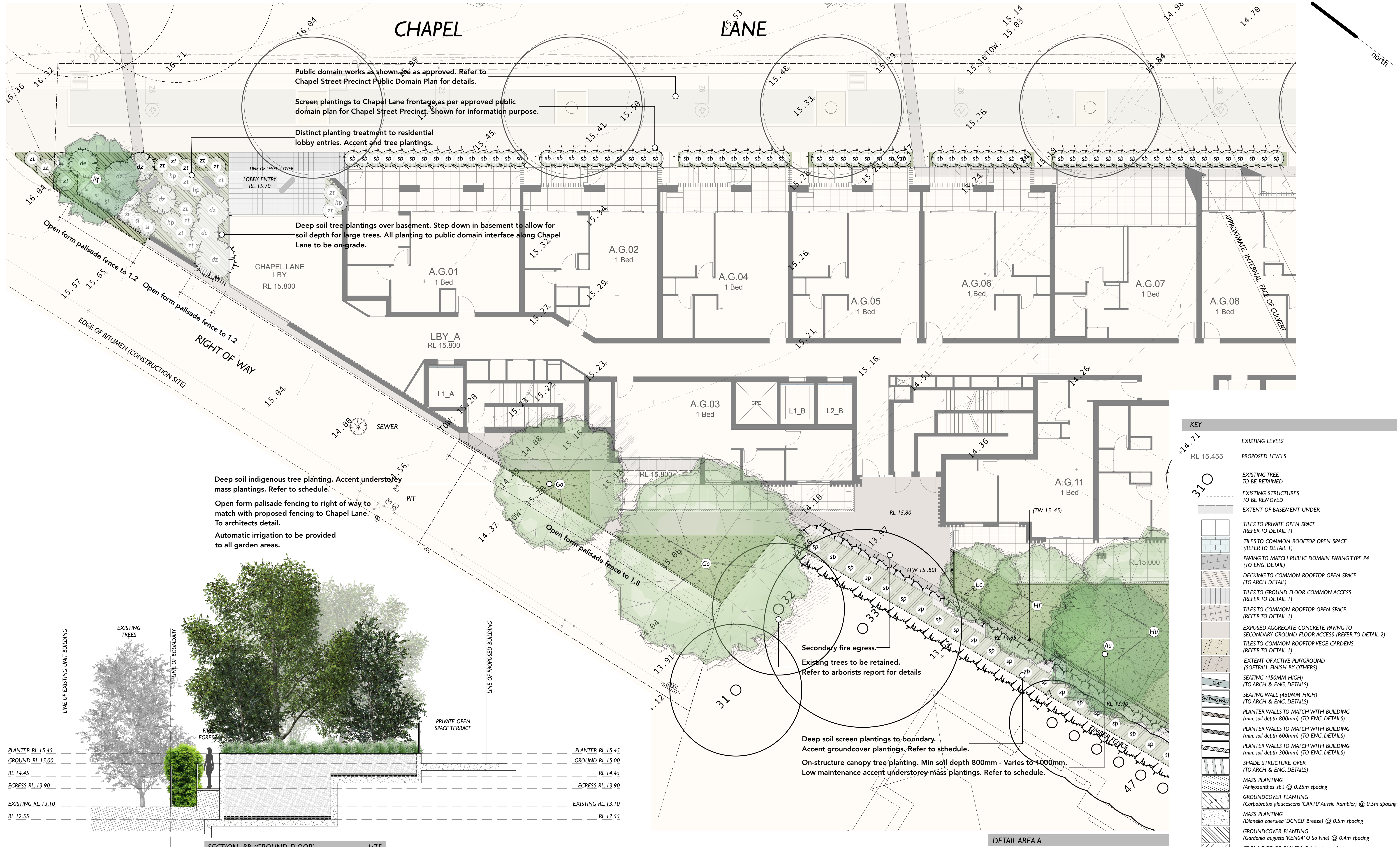
GROUND FLOOR



isthmus pty ltd	ACN 107362149
21 Central Avenue	Como 2226
Ph:+612 9528 4903	www.isthmus.com.au
Email:landscape@isthmus.com.au	

REV:	AMENDMENT:	INT:	DATE:	LANDSCAPE PLAN - BUILDINGS A & B	DWG: IS0268DA2
				GROUND FLOOR	ISSUE: B
B	AUTHORITY APPROVAL	MW	01.05.20	DATE: MAY 2020	CHapel STREET PRECINCT, ROCKDALE 2216
A	AUTHORITY APPROVAL	MW	17.10.19	SCALE: 1:200@A1 - 1:400@A3	



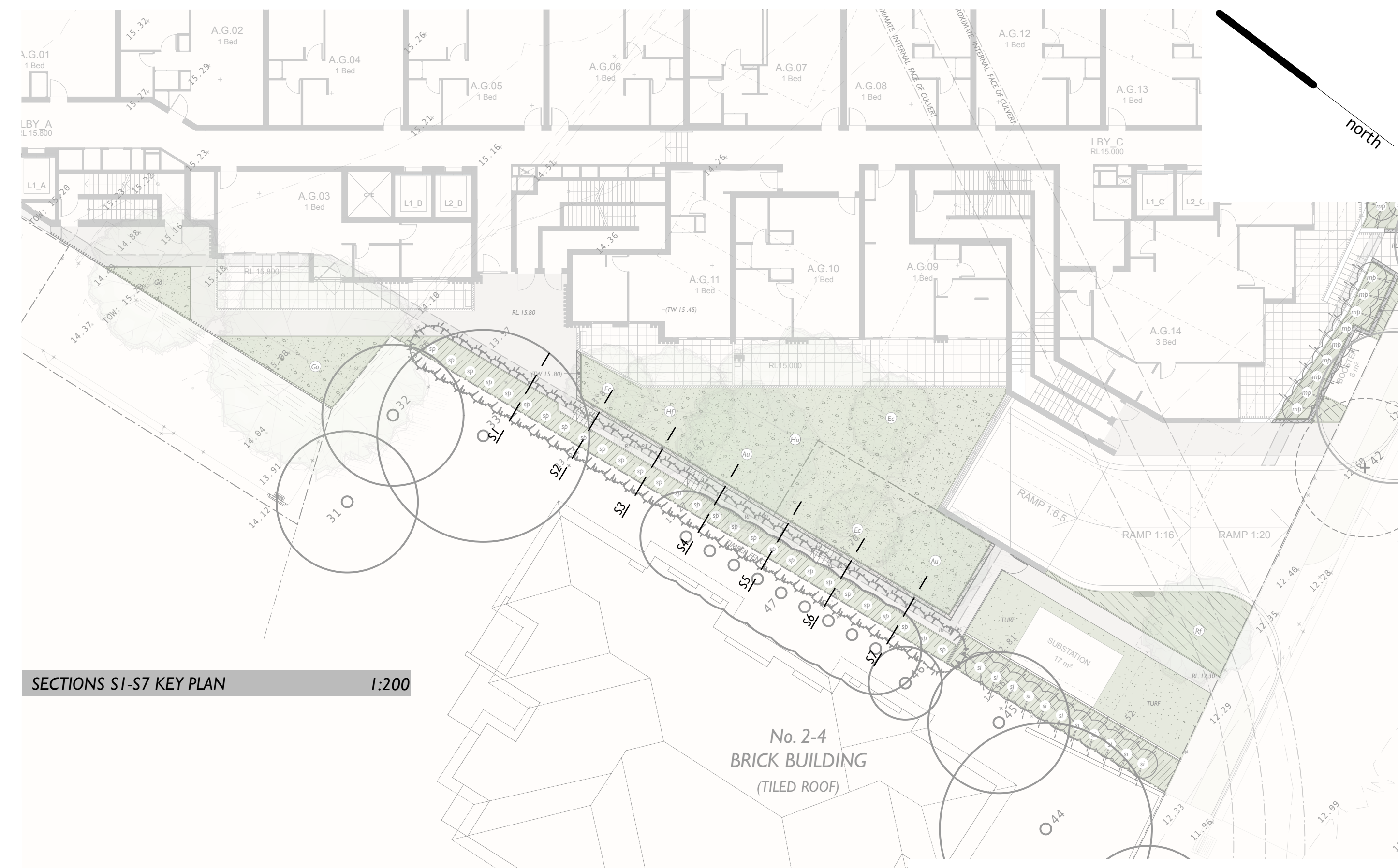
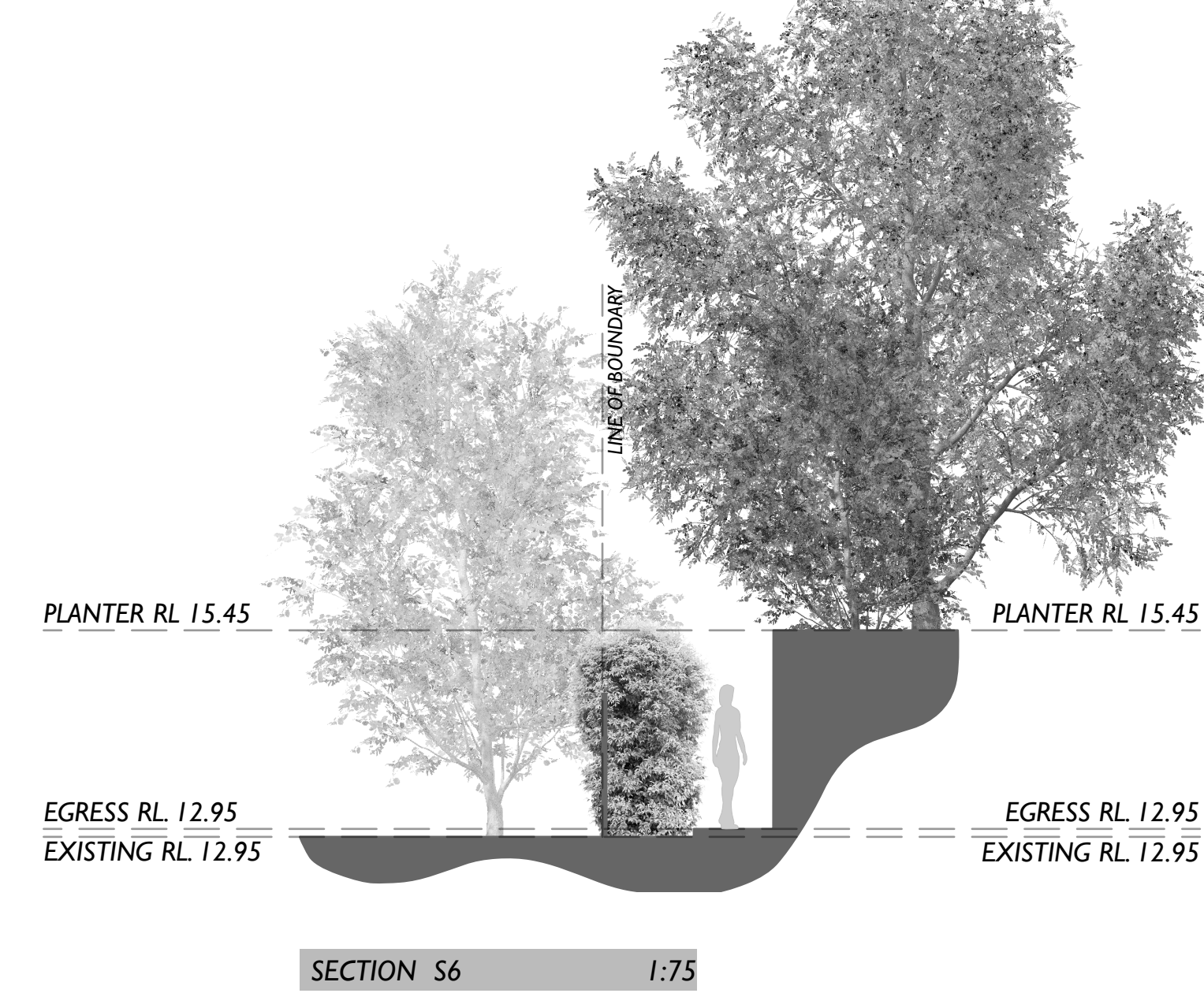
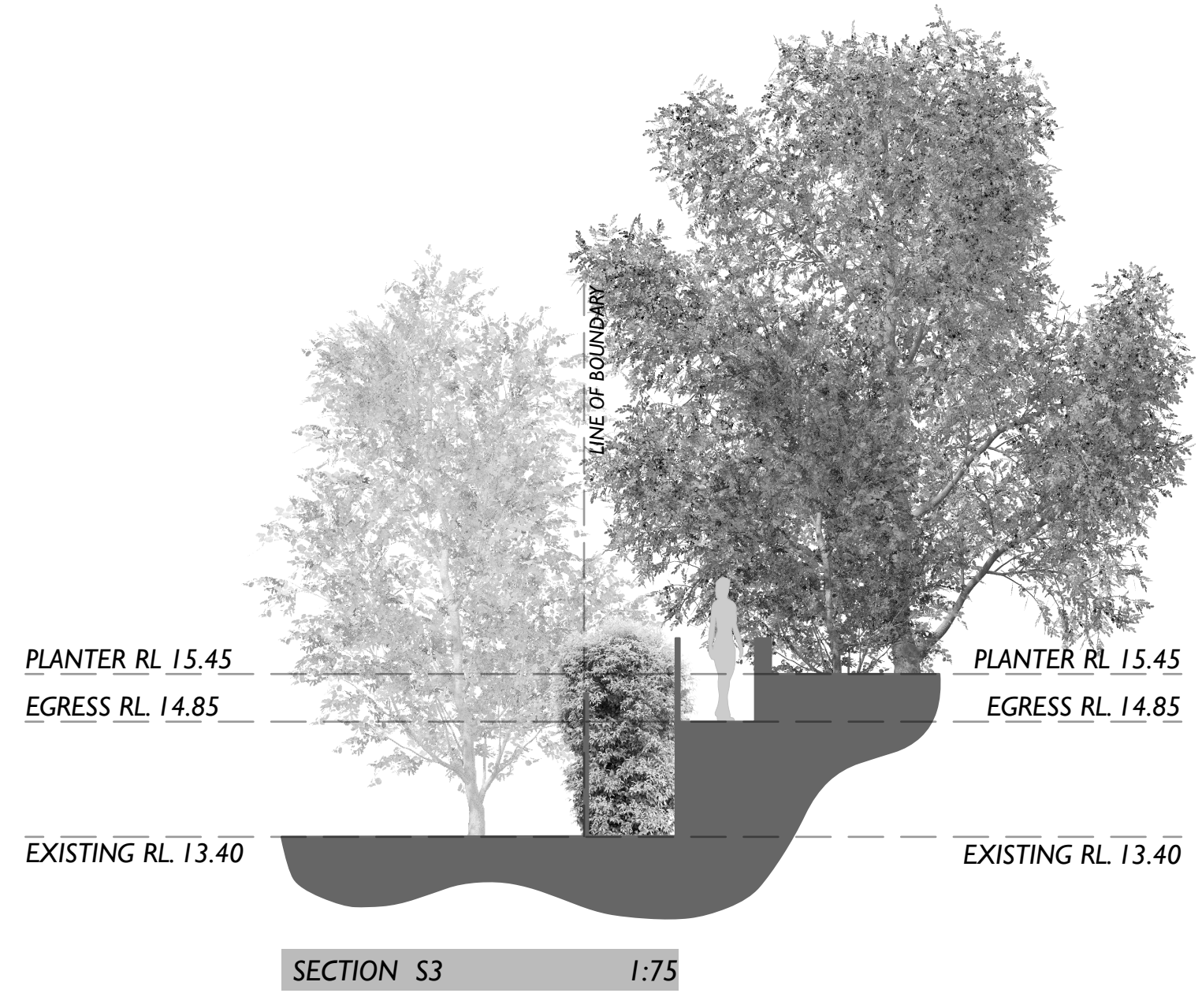
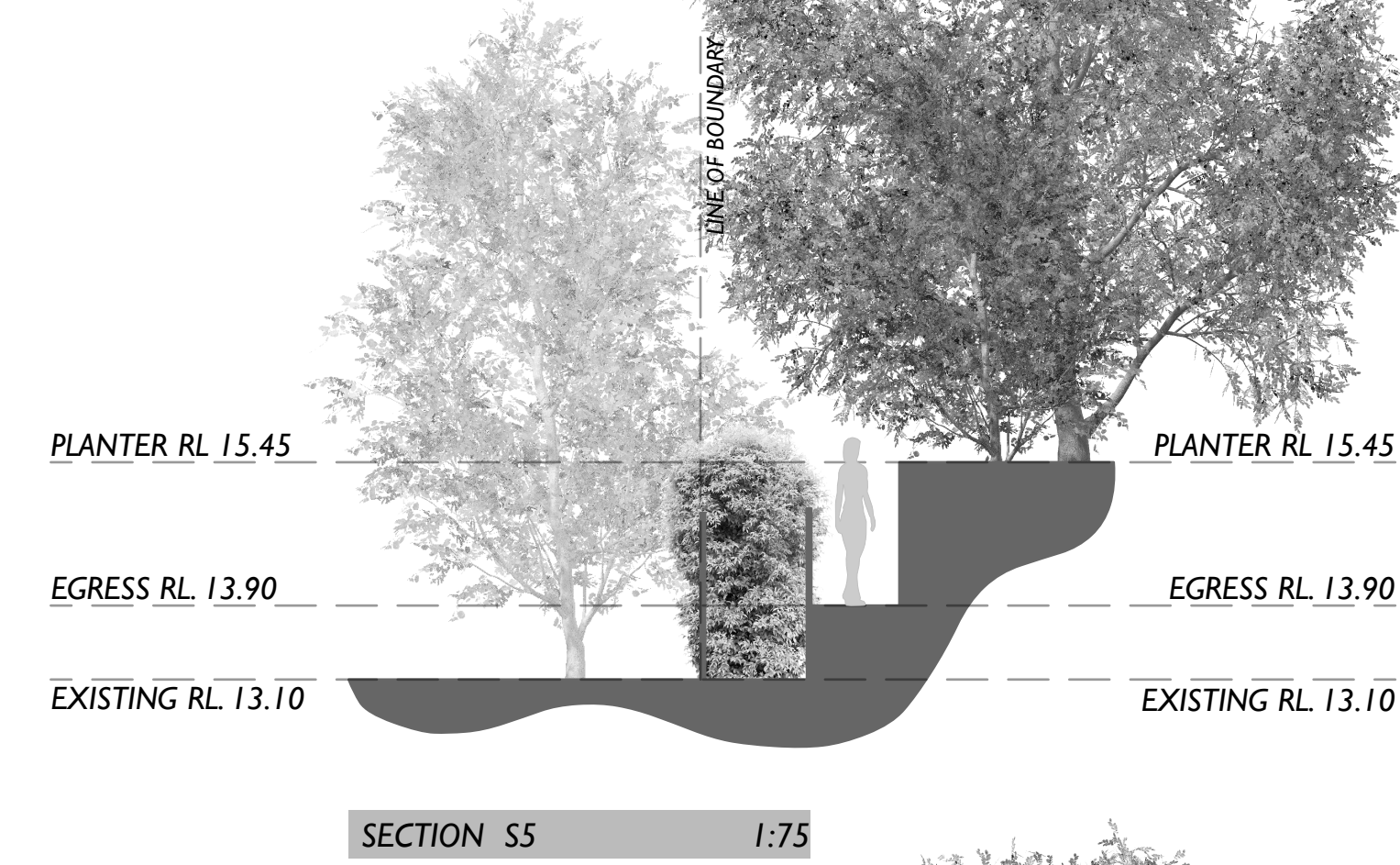
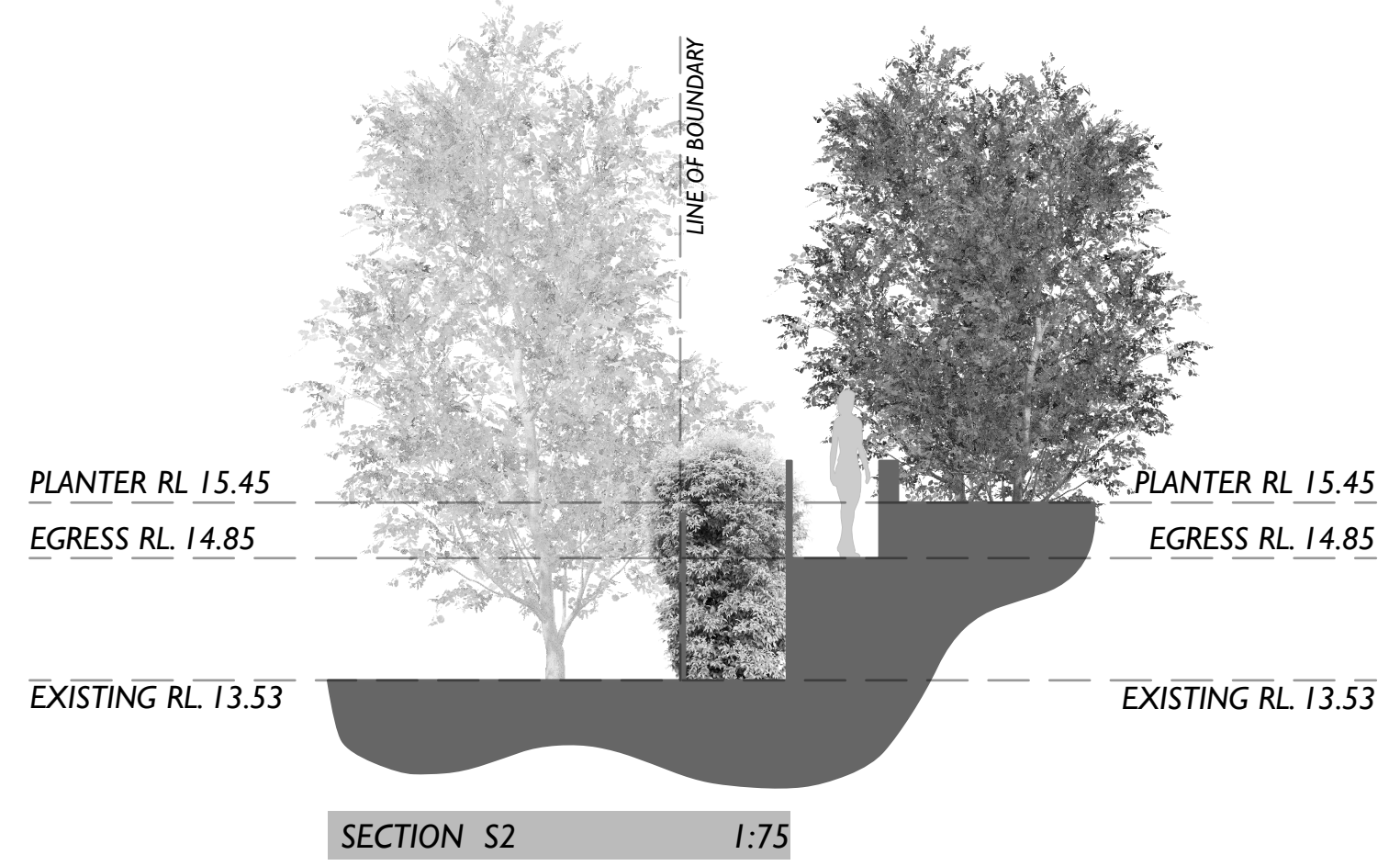
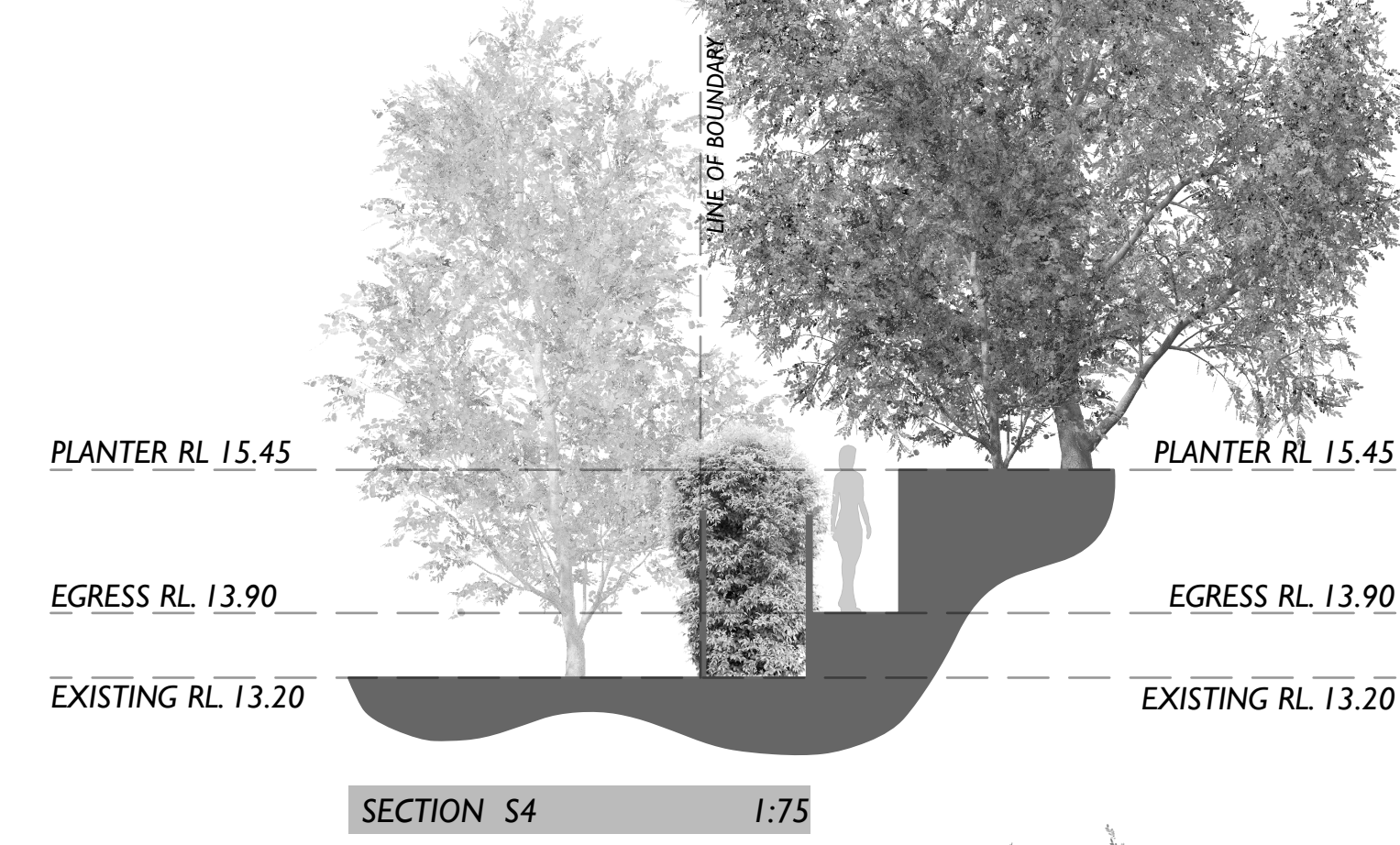
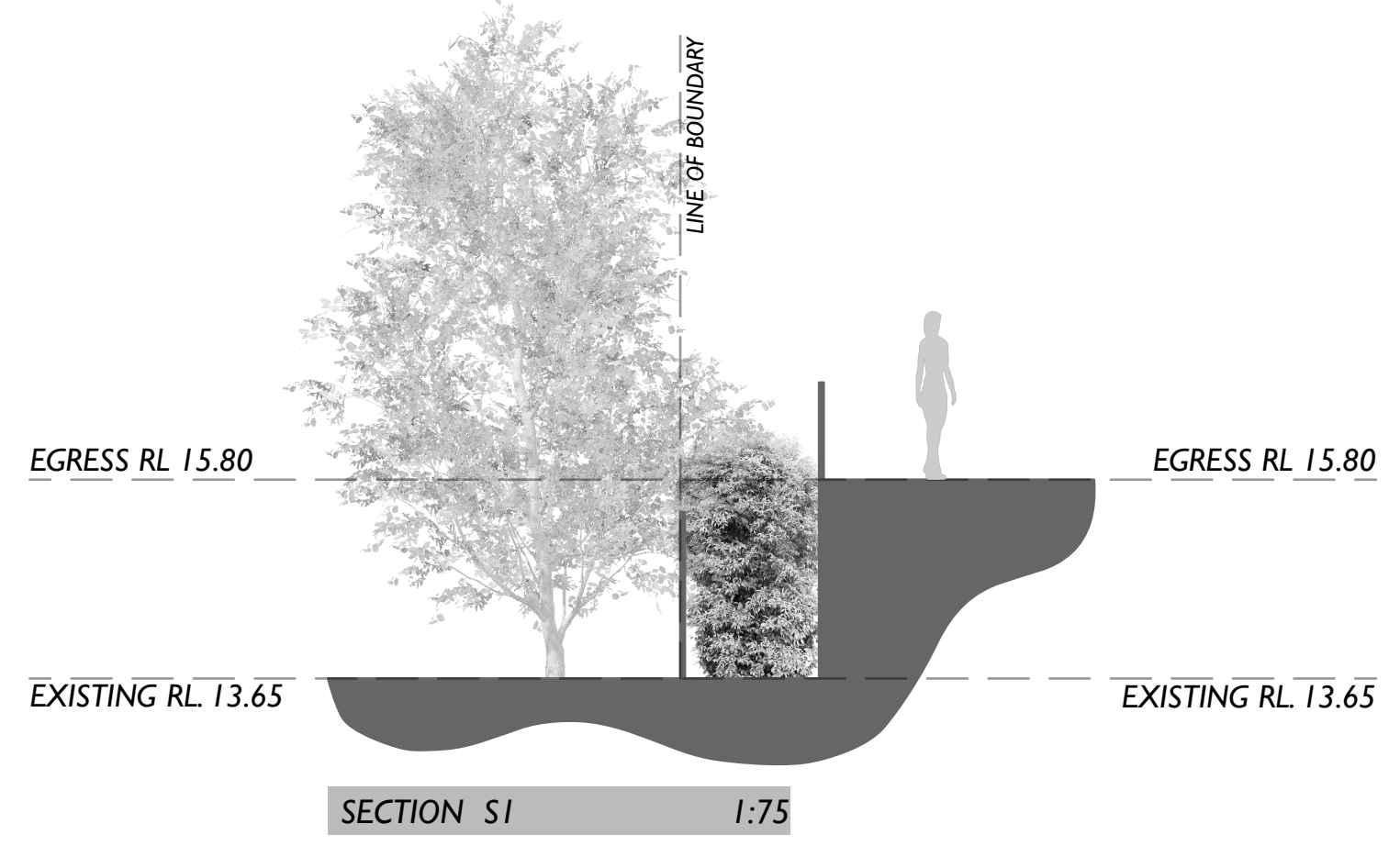


building A - ground floor



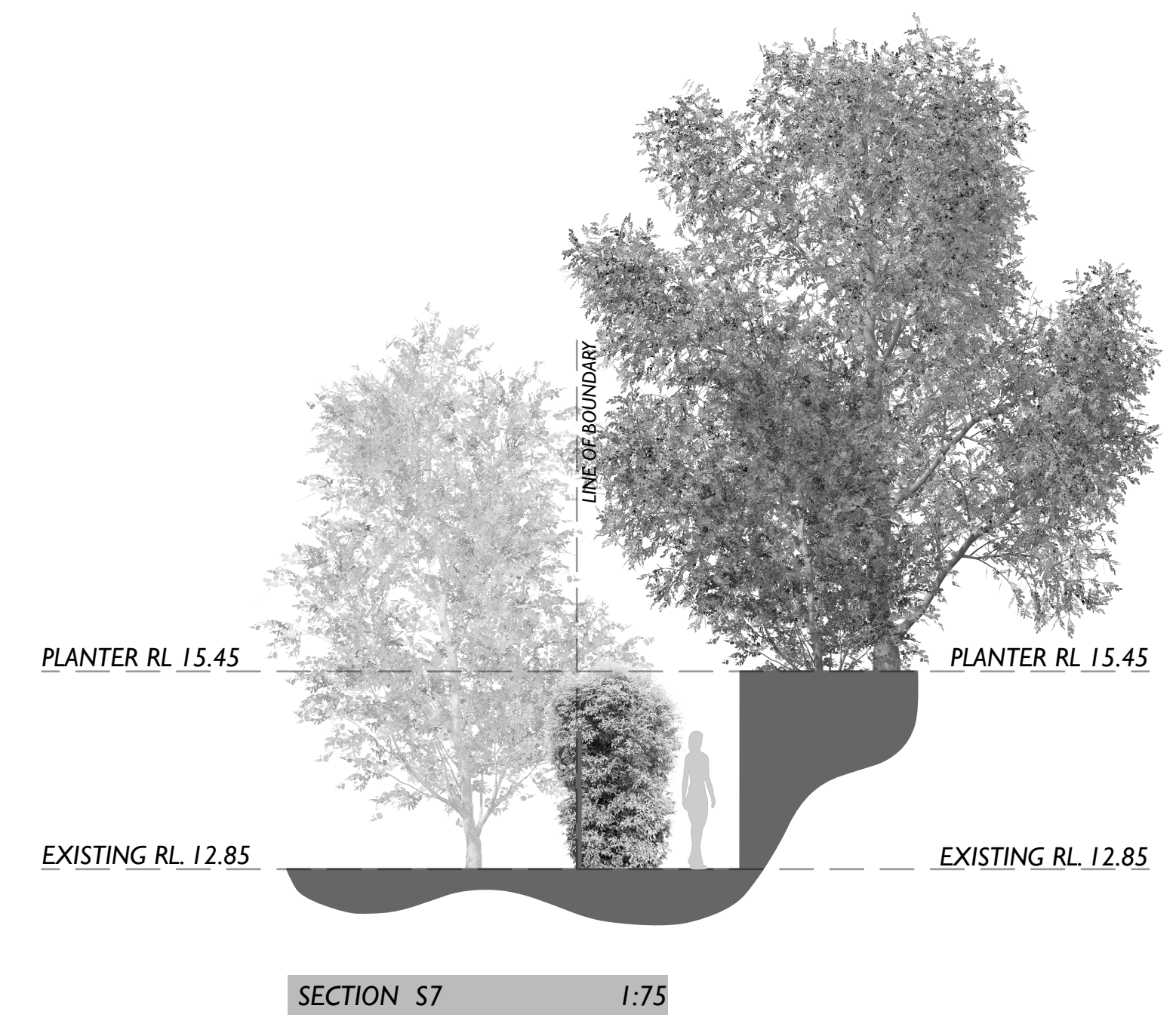
isthmus pty ltd	ACN 107362149
21 Central Avenue	Como 2226
Ph:+612 9528 4903	www.isthmus.com.au
Email:landscape@isthmus.com.au	

REV:	AMENDMENT:	INT:	DATE:	LANDSCAPE PLAN - BUILDINGS A & B	DWG: IS0268DA3
				ISSUE: B	
DETAIL AREA A - GROUND				DATE: MAY 2020	CHAPEL STREET PRECINCT, ROCKDALE 2216
B	AUTHORITY APPROVAL	MW	01.05.20	SCALE: 1:100@A1 - 1:200@A3	0 1 5 10m
A	AUTHORITY APPROVAL	MW	17.10.19		

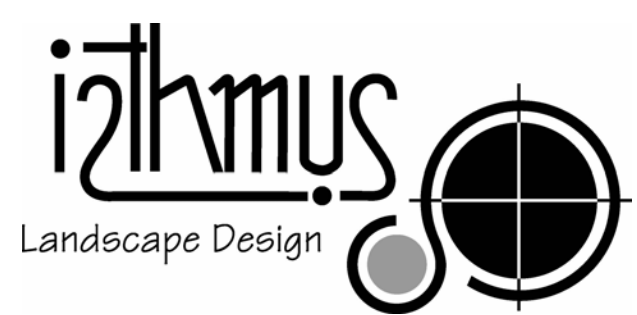


KEY

- EXISTING LEVELS
- PROPOSED LEVELS
- EXISTING TREE TO BE RETAINED
- EXISTING STRUCTURES TO BE REMOVED
- EXTENT OF BASEMENT UNDER
- TILES TO PRIVATE OPEN SPACE (REFER TO DETAIL 1)
- TILES TO COMMON ROOFTOP OPEN SPACE (REFER TO DETAIL 1)
- PAVING TO MATCH PUBLIC DOMAIN PAVING TYPE P4 (TO ENG. DETAIL)
- DECKING TO COMMON ROOFTOP OPEN SPACE (TO ARCH DETAIL)
- TILES TO GROUND FLOOR COMMON ACCESS (REFER TO DETAIL 1)
- TILES TO COMMON ROOFTOP OPEN SPACE (REFER TO DETAIL 1)
- EXPOSED AGGREGATE CONCRETE PAVING TO SECONDARY GROUND FLOOR ACCESS (REFER TO DETAIL 2)
- TILES TO COMMON ROOFTOP VEGE GARDENS (REFER TO DETAIL 1)
- EXTENT OF ACTIVE PLAYGROUND (SOFTFALL FINISH BY OTHERS)
- SEATING (450MM HIGH) (TO ARCH & ENG. DETAILS)
- SEATING WALL (450MM HIGH) (TO ARCH & ENG. DETAILS)
- PLANTER WALLS TO MATCH WITH BUILDING (min. soil depth 800mm) (TO ENG. DETAILS)
- PLANTER WALLS TO MATCH WITH BUILDING (min. soil depth 600mm) (TO ENG. DETAILS)
- PLANTER WALLS TO MATCH WITH BUILDING (min. soil depth 300mm) (TO ENG. DETAILS)
- SHADE STRUCTURE OVER (TO ARCH & ENG. DETAILS)
- MASS PLANTING (Anigozanthos sp.) @ 0.25m spacing
- GROUNDCOVER PLANTING (Carobrotus glaucescens 'CAR10' Aussie Rambler) @ 0.5m spacing
- MASS PLANTING (Dianella caerulea 'DCNCO' Breeze) @ 0.5m spacing
- GROUNDCOVER PLANTING (Gardenia augusta 'KENO4' O So Fine) @ 0.4m spacing
- GROUNDCOVER PLANTING (check spacing)
- GROUNDCOVER PLANTING (Liriope muscari 'LIRJ' Just Right) @ 0.4m spacing
- GROUNDCOVER PLANTING (Myoporum parvifolium 'PARV01' Yareena) @ 0.5m spacing
- MASS PLANTING (Philodendron 'Xanadu') @ 0.4m spacing
- GROUNDCOVER PLANTING (Viola hederacea) @ 0.5m spacing

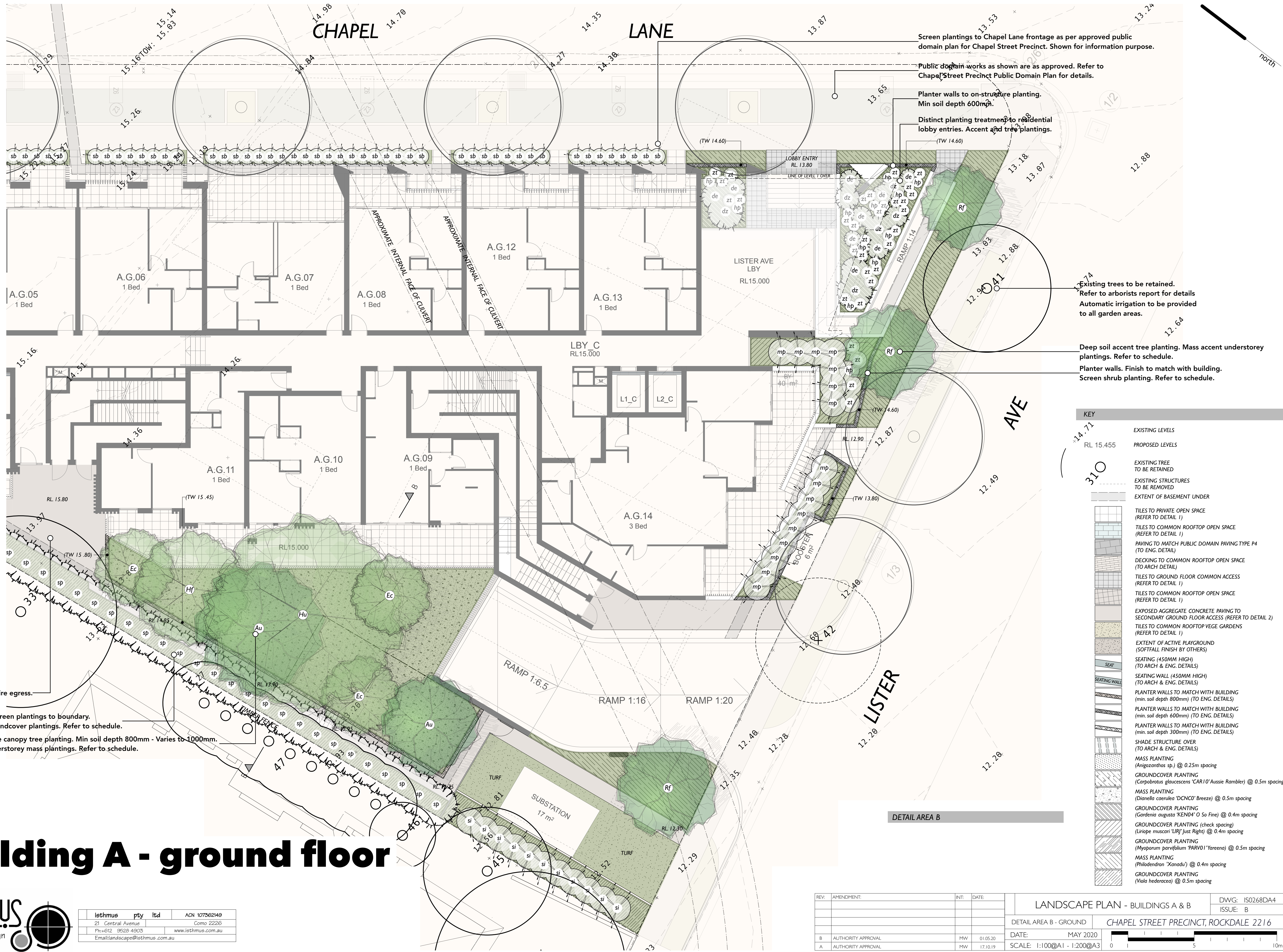


building A - ground floor



isthmus pty ltd	ACN 107362149
21 Central Avenue	Como 2226
Ph:+612 9528 4903	www.isthmus.com.au
Email:landscape@isthmus.com.au	

REV:	AMENDMENT:	INT:	DATE:	LANDSCAPE PLAN - BUILDINGS A & B		DWG: IS0268DA3a
				GROUND		ISSUE: B
B	AUTHORITY APPROVAL	MW	01.05.20	DATE:	MAY 2020	CHapel Street Precinct, Rockdale 2216
A	AUTHORITY APPROVAL	MW	17.10.19	SCALE:	1:100@A1 - 1:200@A3	



Screen plantings to Chapel Lane frontage as per approved public domain plan for Chapel Street Precinct. Shown for information purpose.

Public domain works as shown are as approved. Refer to Chapel Street Precinct Public Domain Plan for details.

Planter walls to on-structure planting. Min soil depth 600mm.

Distinct planting treatment to residential lobby entries. Accent tree plantings.

Existing trees to be retained. Refer to arborists report for details. Automatic irrigation to be provided to all garden areas.

Deep soil accent tree planting. Mass accent understorey plantings. Refer to schedule.

Planter walls. Finish to match with building.

Screen shrub planting. Refer to schedule.

Secondary fire egress.

Deep soil screen plantings to boundary. Accent groundcover plantings. Refer to schedule.

On-structure canopy tree planting. Min soil depth 800mm - Varies to 1000mm.

Accent understorey mass plantings. Refer to schedule.

KEY	
EXISTING LEVELS	RL 15.455
PROPOSED LEVELS	310
EXISTING TREE TO BE RETAINED	(Symbol)
EXISTING STRUCTURES TO BE REMOVED	(Symbol)
EXTENT OF BASEMENT UNDER	(Symbol)
TILES TO PRIVATE OPEN SPACE (REFER TO DETAIL 1)	(Symbol)
TILES TO COMMON ROOFTOP OPEN SPACE (REFER TO DETAIL 1)	(Symbol)
PAVING TO MATCH PUBLIC DOMAIN PAVING TYPE P4 (TO ENG. DETAIL)	(Symbol)
DECKING TO COMMON ROOFTOP OPEN SPACE (TO ARCH DETAIL)	(Symbol)
TILES TO GROUND FLOOR COMMON ACCESS (REFER TO DETAIL 1)	(Symbol)
TILES TO COMMON ROOFTOP OPEN SPACE (REFER TO DETAIL 1)	(Symbol)
EXPOSED AGGREGATE CONCRETE PAVING TO SECONDARY GROUND FLOOR ACCESS (REFER TO DETAIL 2)	(Symbol)
TILES TO COMMON ROOFTOP VEGE GARDENS (REFER TO DETAIL 1)	(Symbol)
EXTENT OF ACTIVE PLAYGROUND (SOFTFALL FINISH BY OTHERS)	(Symbol)
SEATING (450MM HIGH) (TO ARCH & ENG. DETAILS)	(Symbol)
SEATING WALL (450MM HIGH) (TO ARCH & ENG. DETAILS)	(Symbol)
PLANTER WALLS TO MATCH WITH BUILDING (min. soil depth 800mm) (TO ENG. DETAILS)	(Symbol)
PLANTER WALLS TO MATCH WITH BUILDING (min. soil depth 600mm) (TO ENG. DETAILS)	(Symbol)
PLANTER WALLS TO MATCH WITH BUILDING (min. soil depth 300mm) (TO ENG. DETAILS)	(Symbol)
SHADE STRUCTURE OVER (TO ARCH & ENG. DETAILS)	(Symbol)
MASS PLANTING (Anigozanthos sp.) @ 0.25m spacing	(Symbol)
GROUNDCOVER PLANTING (Carobratrus glaucescens 'CAR10' Aussie Rambler) @ 0.5m spacing	(Symbol)
MASS PLANTING (Dianella caerulea 'DCNCO' Breeze) @ 0.5m spacing	(Symbol)
GROUNDCOVER PLANTING (Gardenia augusta 'KEN4' O So Fine) @ 0.4m spacing	(Symbol)
GROUNDCOVER PLANTING (check spacing) (Liriope muscari 'LIRJ' Just Right) @ 0.4m spacing	(Symbol)
GROUNDCOVER PLANTING (Myoporum parvifolium 'PARV01' Yareena) @ 0.5m spacing	(Symbol)
MASS PLANTING (Philodendron 'Xanadu') @ 0.4m spacing	(Symbol)
GROUNDCOVER PLANTING (Viola hederacea) @ 0.5m spacing	(Symbol)

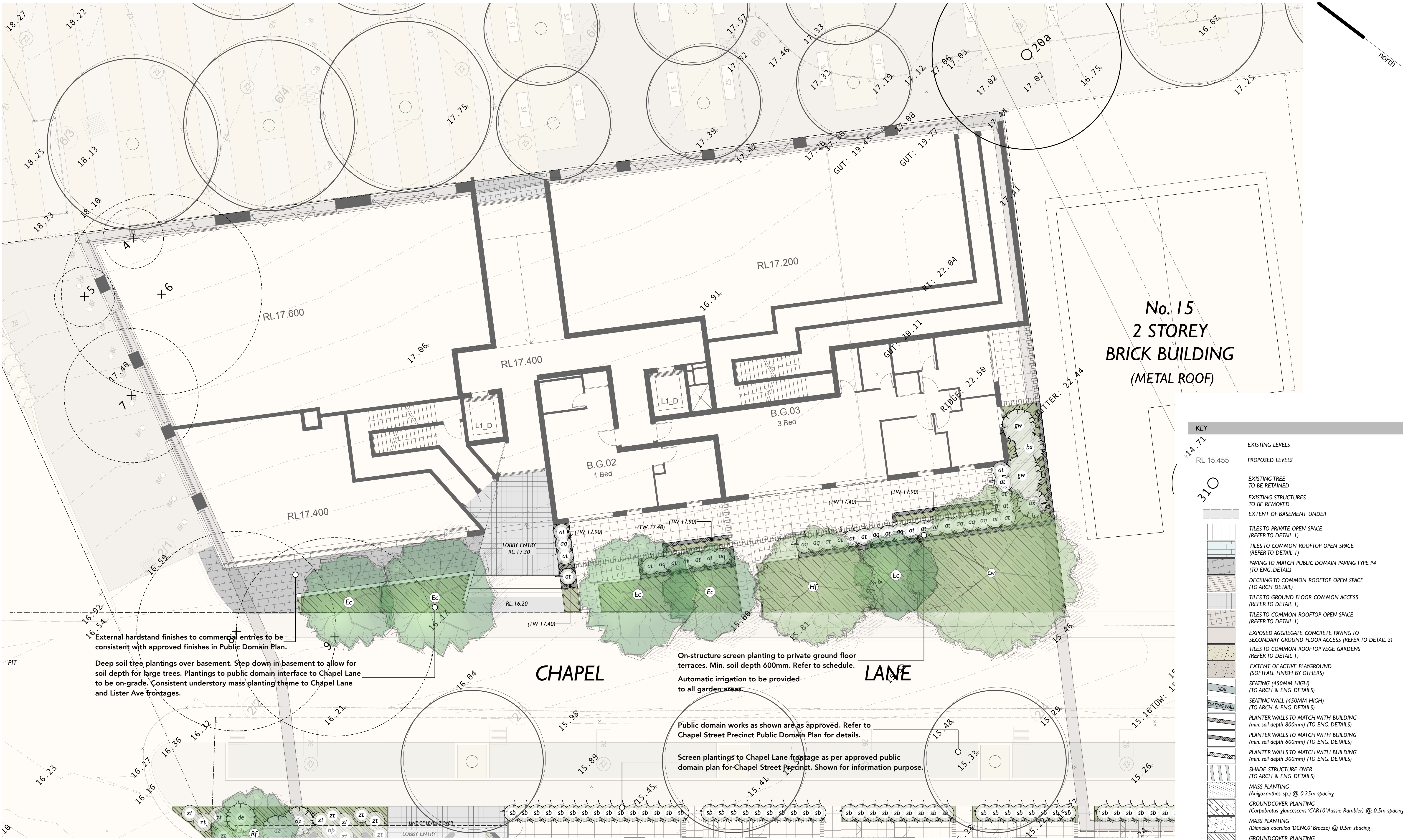
building A - ground floor

isthmus Landscape Design

isthmus pty ltd	ACN 107362149
21 Central Avenue	Como 2226
Ph:+612 9528 4903	www.isthmus.com.au
Email:landscape@isthmus.com.au	

REV:	AMENDMENT:	INT:	DATE:	LANDSCAPE PLAN - BUILDINGS A & B		DWG: IS0268DA4
				DETAIL AREA B - GROUND		ISSUE: B
B	AUTHORITY APPROVAL	MW	01.05.20	DATE:	MAY 2020	
A	AUTHORITY APPROVAL	MW	17.10.19	SCALE:	1:100@A1 - 1:200@A3	

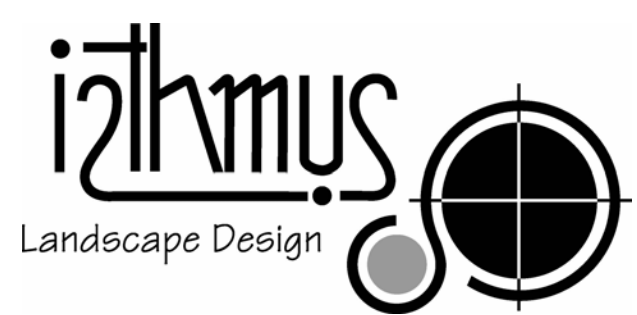
CHapel Street Precinct, Rockdale 2216



No. 15
2 STOREY
BRICK BUILDING
(METAL ROOF)

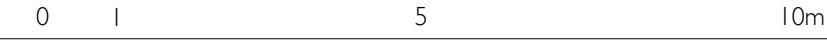
KEY	
RL 15.455	EXISTING LEVELS
310	PROPOSED LEVELS
(Circle with number)	EXISTING TREE TO BE RETAINED
(Dashed line)	EXISTING STRUCTURES TO BE REMOVED
(Grey hatched)	EXTENT OF BASEMENT UNDER
(Blue hatched)	TILES TO PRIVATE OPEN SPACE (REFER TO DETAIL 1)
(Light blue hatched)	TILES TO COMMON ROOFTOP OPEN SPACE (REFER TO DETAIL 1)
(Dark blue hatched)	PAVING TO MATCH PUBLIC DOMAIN PAVING TYPE P4 (TO ENG. DETAIL)
(Green hatched)	DECKING TO COMMON ROOFTOP OPEN SPACE (TO ARCH DETAIL)
(Yellow hatched)	TILES TO GROUND FLOOR COMMON ACCESS (REFER TO DETAIL 1)
(Light green hatched)	TILES TO COMMON ROOFTOP OPEN SPACE (REFER TO DETAIL 1)
(Dark green hatched)	EXPOSED AGGREGATE CONCRETE PAVING TO SECONDARY GROUND FLOOR ACCESS (REFER TO DETAIL 2)
(Light blue hatched)	TILES TO COMMON ROOFTOP VEGE GARDENS (REFER TO DETAIL 1)
(Green hatched)	EXTENT OF ACTIVE PLAYGROUND (SOFTFALL FINISH BY OTHERS)
(Blue hatched)	SEATING (450MM HIGH) (TO ARCH & ENG. DETAILS)
(Blue hatched)	SEATING WALL (450MM HIGH) (TO ARCH & ENG. DETAILS)
(Blue hatched)	PLANTER WALLS TO MATCH WITH BUILDING (min. soil depth 800mm) (TO ENG. DETAILS)
(Blue hatched)	PLANTER WALLS TO MATCH WITH BUILDING (min. soil depth 600mm) (TO ENG. DETAILS)
(Blue hatched)	PLANTER WALLS TO MATCH WITH BUILDING (min. soil depth 300mm) (TO ENG. DETAILS)
(Blue hatched)	SHADE STRUCTURE OVER (TO ARCH & ENG. DETAILS)
(Blue hatched)	MASS PLANTING (Anigozanthos sp.) @ 0.25m spacing
(Blue hatched)	GROUNDCOVER PLANTING (Carobrotus glaucescens 'CAR10' Aussie Rambler) @ 0.5m spacing
(Blue hatched)	MASS PLANTING (Dianella caerulea 'DCNCO' Breeze) @ 0.5m spacing
(Blue hatched)	GROUNDCOVER PLANTING (Gardenia augusta 'KEN04' O So Fine) @ 0.4m spacing
(Blue hatched)	GROUNDCOVER PLANTING (check spacing) (Liriope muscari 'LIRJ' Just Right) @ 0.4m spacing
(Blue hatched)	GROUNDCOVER PLANTING (Myoporum parvifolium 'PARV01' Yareena) @ 0.5m spacing
(Blue hatched)	MASS PLANTING (Philodendron 'Xanadu') @ 0.4m spacing
(Blue hatched)	GROUNDCOVER PLANTING (Viola hederacea) @ 0.5m spacing

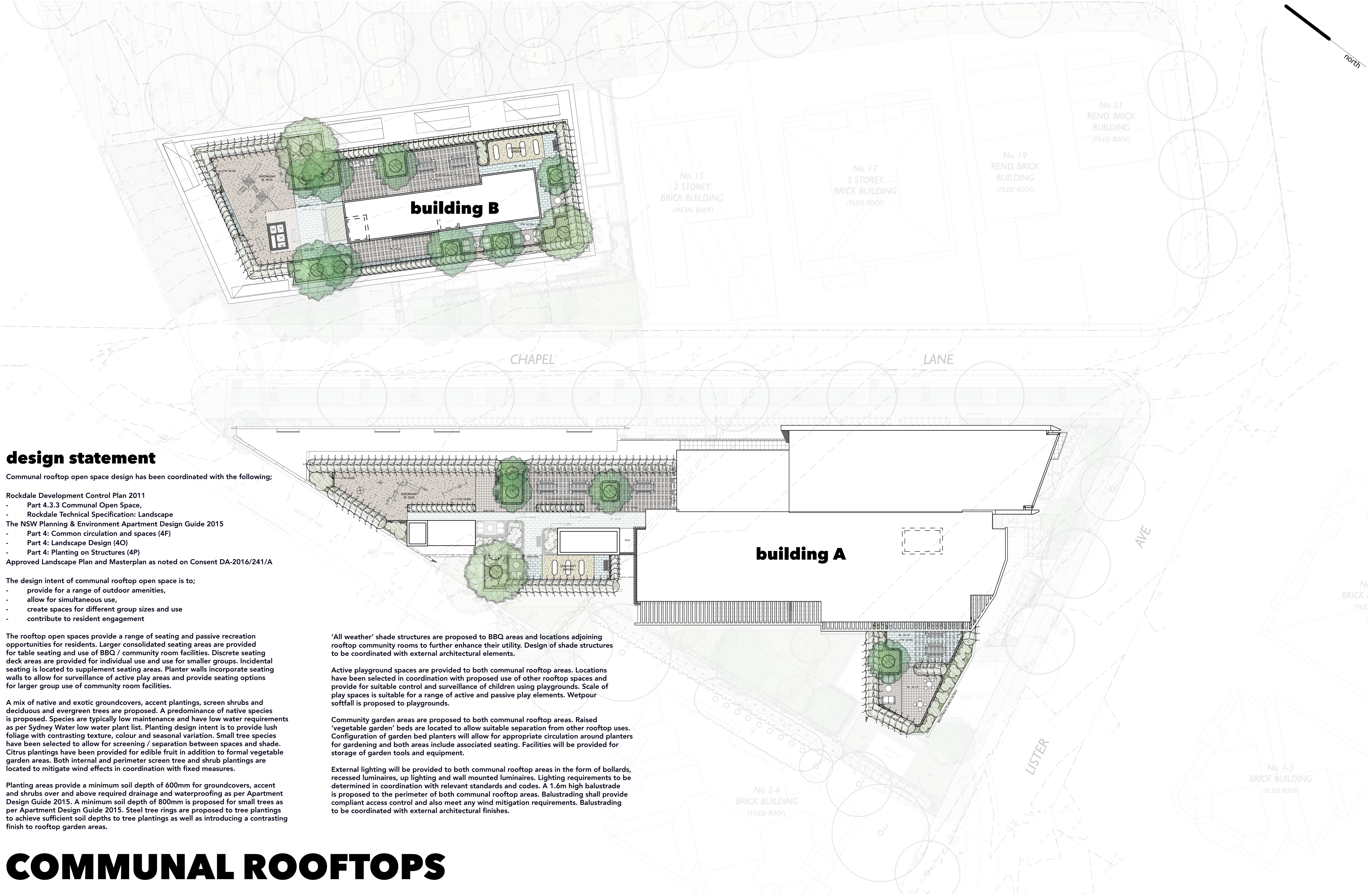
building B - ground floor



isthmus pty ltd	ACN 107362149
21 Central Avenue	Como 2226
Ph:+612 9528 4903	www.isthmus.com.au
Email:landscape@isthmus.com.au	

REV.	AMENDMENT:	INT.	DATE:	LANDSCAPE PLAN - BUILDINGS A & B		DWG: IS0268DA5
				DETAIL AREA C - GROUND		ISSUE: B
B	AUTHORITY APPROVAL	MW	01.05.20	DATE:	MAY 2020	
A	AUTHORITY APPROVAL	MW	17.10.19	SCALE:	1:100@A1 - 1:200@A3	





design statement

Communal rooftop open space design has been coordinated with the following;

- Rockdale Development Control Plan 2011
 - Part 4.3.3 Communal Open Space,
 - Rockdale Technical Specification: Landscape
- The NSW Planning & Environment Apartment Design Guide 2015
 - Part 4: Common circulation and spaces (4F)
 - Part 4: Landscape Design (4O)
 - Part 4: Planting on Structures (4P)
- Approved Landscape Plan and Masterplan as noted on Consent DA-2016/241/A

The design intent of communal rooftop open space is to;

- provide for a range of outdoor amenities,
- allow for simultaneous use,
- create spaces for different group sizes and use
- contribute to resident engagement

The rooftop open spaces provide a range of seating and passive recreation opportunities for residents. Larger consolidated seating areas are provided for table seating and use of BBQ / community room facilities. Discrete seating deck areas are provided for individual use and use for smaller groups. Incidental seating is located to supplement seating areas. Planter walls incorporate seating walls to allow for surveillance of active play areas and provide seating options for larger group use of community room facilities.

A mix of native and exotic groundcovers, accent plantings, screen shrubs and deciduous and evergreen trees are proposed. A predominance of native species is proposed. Species are typically low maintenance and have low water requirements as per Sydney Water low water plant list. Planting design intent is to provide lush foliage with contrasting texture, colour and seasonal variation. Small tree species have been selected to allow for screening / separation between spaces and shade. Citrus plantings have been provided for edible fruit in addition to formal vegetable garden areas. Both internal and perimeter screen tree and shrub plantings are located to mitigate wind effects in coordination with fixed measures.

Planting areas provide a minimum soil depth of 600mm for groundcovers, accent and shrubs over and above required drainage and waterproofing as per Apartment Design Guide 2015. A minimum soil depth of 800mm is proposed for small trees as per Apartment Design Guide 2015. Steel tree rings are proposed to tree plantings to achieve sufficient soil depths to tree plantings as well as introducing a contrasting finish to rooftop garden areas.

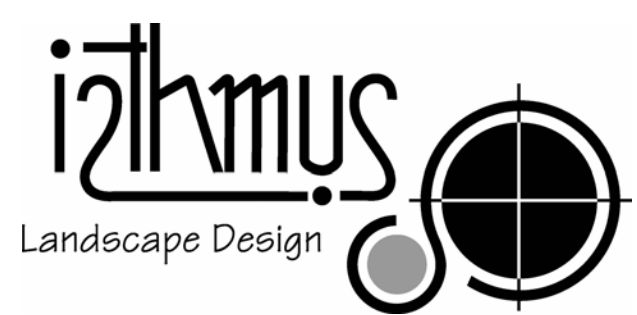
'All weather' shade structures are proposed to BBQ areas and locations adjoining rooftop community rooms to further enhance their utility. Design of shade structures to be coordinated with external architectural elements.

Active playground spaces are provided to both communal rooftop areas. Locations have been selected in coordination with proposed use of other rooftop spaces and provide for suitable control and surveillance of children using playgrounds. Scale of play spaces is suitable for a range of active and passive play elements. Wetpour softfall is proposed to playgrounds.

Community garden areas are proposed to both communal rooftop areas. Raised 'vegetable garden' beds are located to allow suitable separation from other rooftop uses. Configuration of garden bed planters will allow for appropriate circulation around planters for gardening and both areas include associated seating. Facilities will be provided for storage of garden tools and equipment.

External lighting will be provided to both communal rooftop areas in the form of bollards, recessed luminaires, up lighting and wall mounted luminaires. Lighting requirements to be determined in coordination with relevant standards and codes. A 1.6m high balustrade is proposed to the perimeter of both communal rooftop areas. Balustrading shall provide compliant access control and also meet any wind mitigation requirements. Balustrading to be coordinated with external architectural finishes.

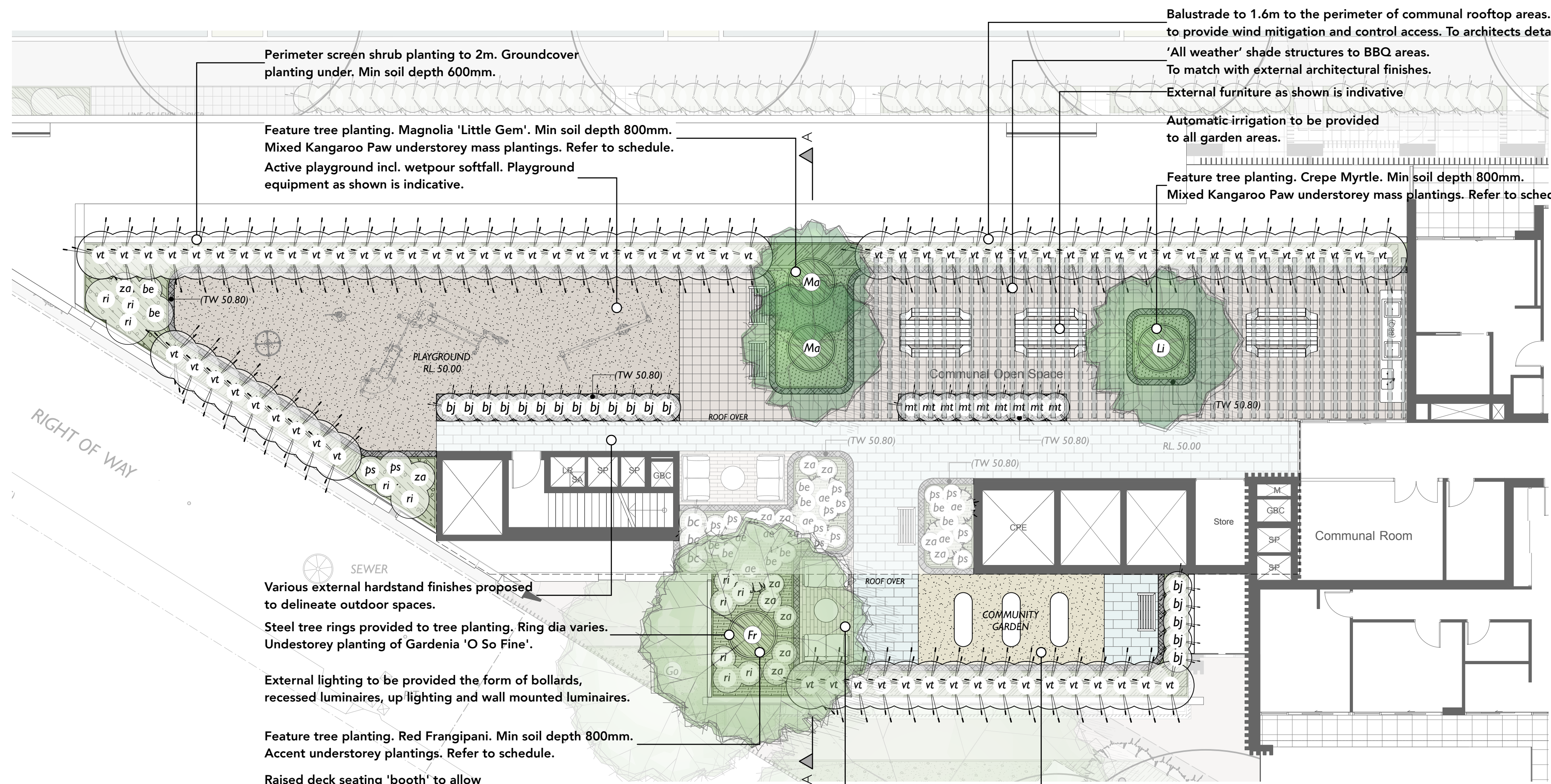
COMMUNAL ROOFTOPS



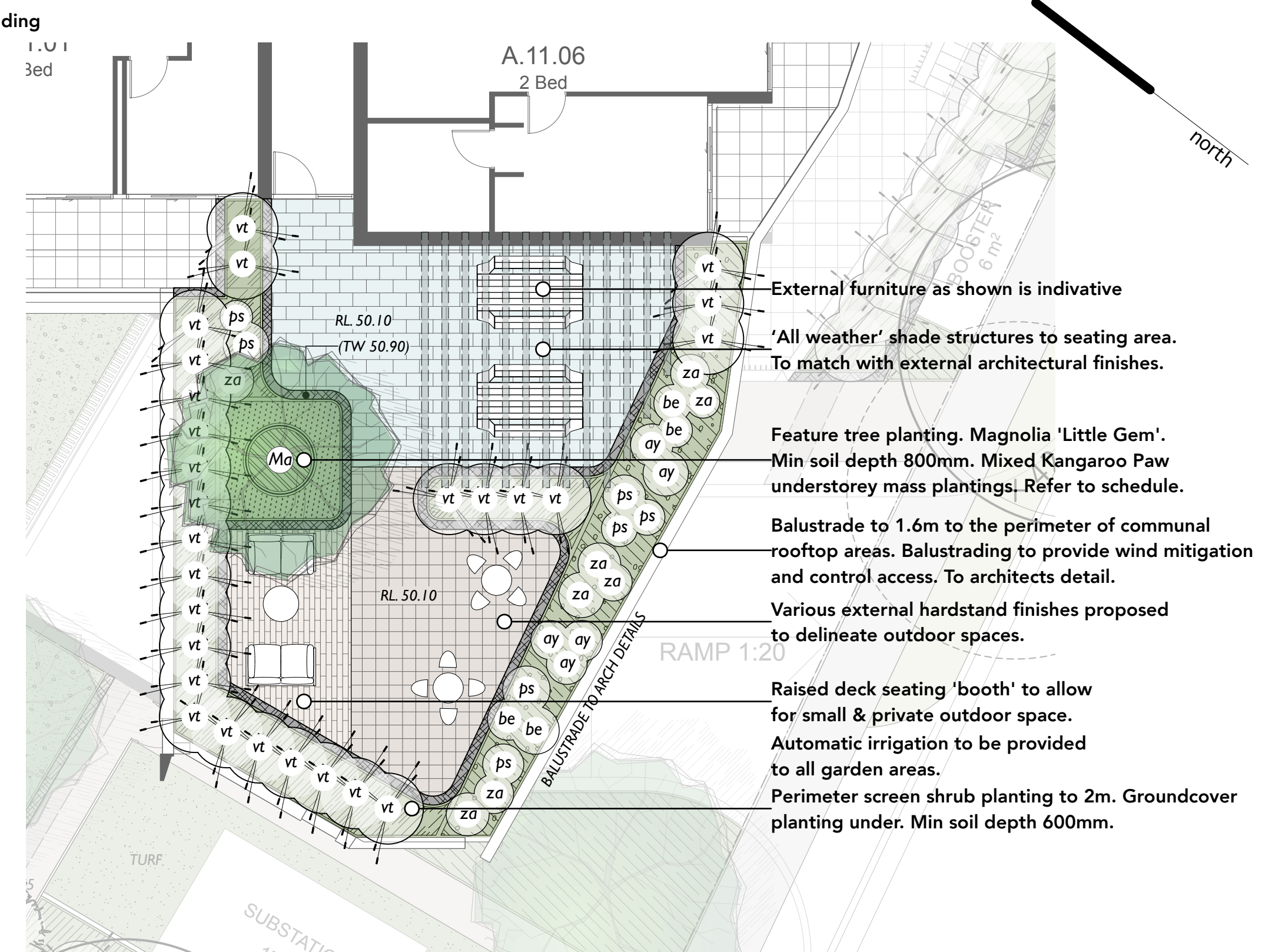
isthmus pty ltd	ACN 107362149
21 Central Avenue	Como 2226
Ph:+612 9528 4903	www.isthmus.com.au
Email:landscape@isthmus.com.au	

REV:	AMENDMENT:	INT:	DATE:	LANDSCAPE PLAN - BUILDINGS A & B		DWG: IS0268DA6
				ROOFTOPS		ISSUE: B
				CHAPEL STREET PRECINCT, ROCKDALE 2216		
B	AUTHORITY APPROVAL	MW	01.05.20	DATE:	MAY 2020	
A	AUTHORITY APPROVAL	MW	17.10.19	SCALE:	1:200@A1 - 1:400@A3	

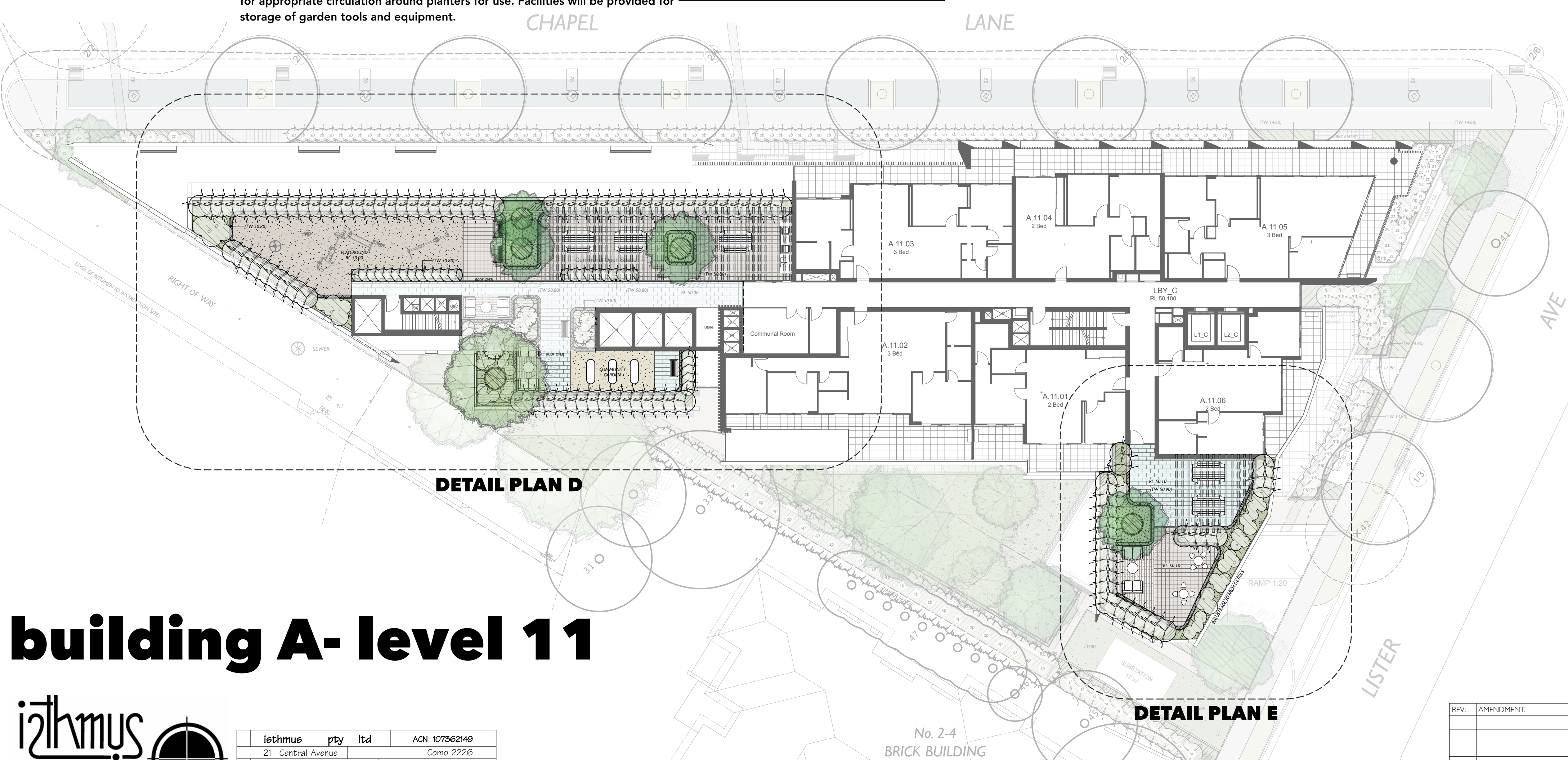




DETAIL AREA D 1:100



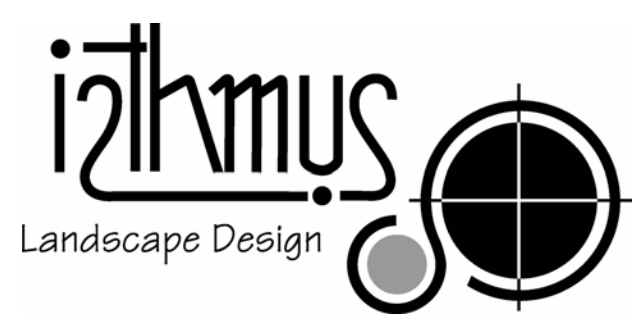
DETAIL AREA E 1:100



KEY

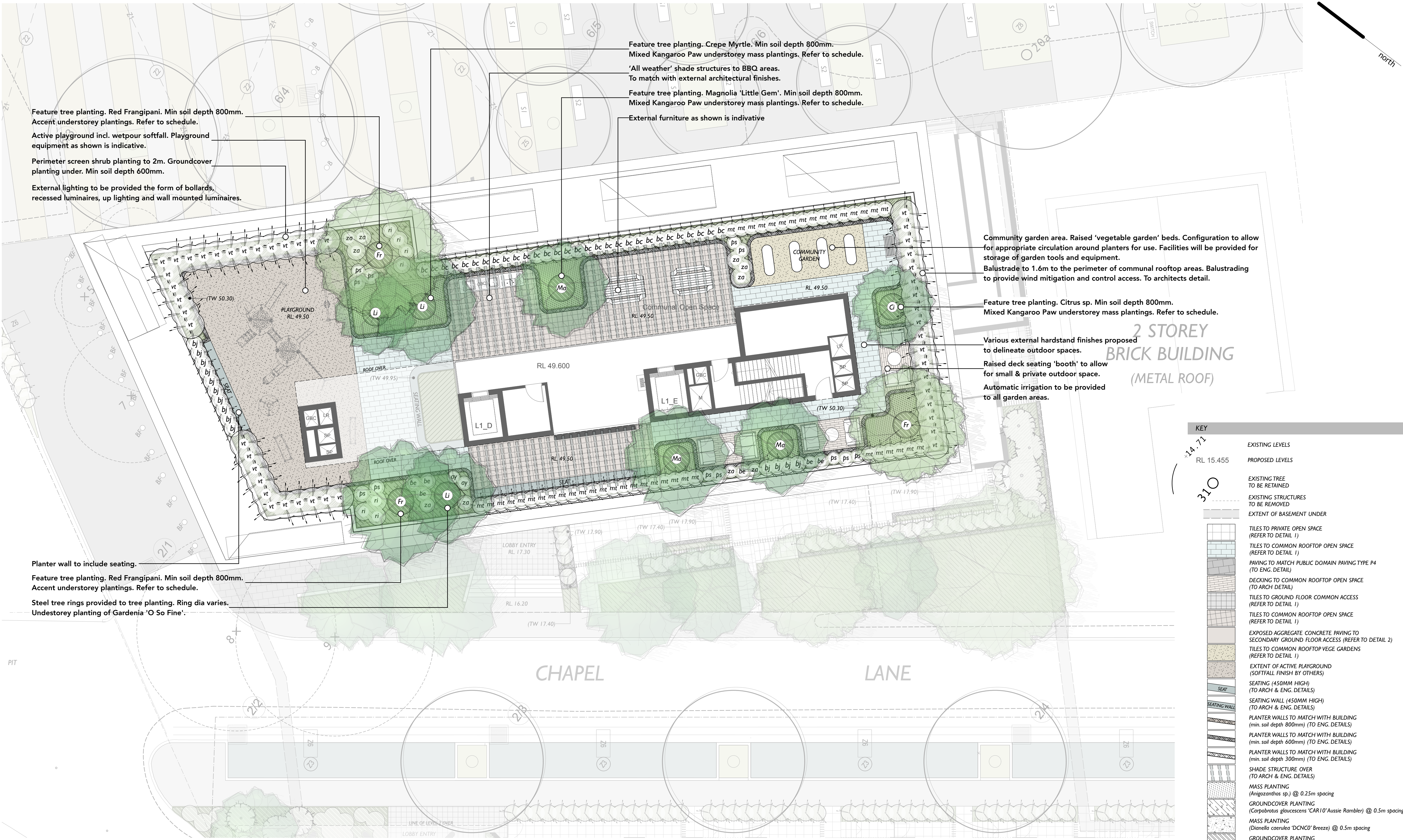
- EXISTING LEVELS
- PROPOSED LEVELS
- EXISTING TREE TO BE RETAINED
- EXISTING TREE TO BE REMOVED
- EXISTING STRUCTURES TO BE REMOVED
- EXTENT OF BASEMENT UNDER
- TILES TO PRIVATE OPEN SPACE (REFER TO DETAIL 1)
- TILES TO COMMON ROOFTOP OPEN SPACE (REFER TO DETAIL 1)
- PAVING TO MATCH PUBLIC DOMAIN PAVING TYPE P4 (TO ENG. DETAIL)
- DECKING TO COMMON ROOFTOP OPEN SPACE (TO ARCH DETAIL)
- TILES TO GROUND FLOOR COMMON ACCESS (REFER TO DETAIL 1)
- TILES TO COMMON ROOFTOP OPEN SPACE (REFER TO DETAIL 1)
- EXPOSED AGGREGATE CONCRETE PAVING TO SECONDARY GROUND FLOOR ACCESS (REFER TO DETAIL 2)
- TILES TO COMMON ROOFTOP VEGE GARDENS (REFER TO DETAIL 1)
- EXTENT OF ACTIVE PLAYGROUND (SOFTFALL FINISH BY OTHERS)
- SEATING (450MM HIGH) (TO ARCH & ENG. DETAILS)
- SEATING WALL (450MM HIGH) (TO ARCH & ENG. DETAILS)
- PLANTER WALLS TO MATCH WITH BUILDING (min. soil depth 800mm) (TO ENG. DETAILS)
- PLANTER WALLS TO MATCH WITH BUILDING (min. soil depth 600mm) (TO ENG. DETAILS)
- PLANTER WALLS TO MATCH WITH BUILDING (min. soil depth 300mm) (TO ENG. DETAILS)
- SHADE STRUCTURE OVER (TO ARCH & ENG. DETAILS)
- MASS PLANTING (Anigozanthos sp.) @ 0.25m spacing
- GROUNDCOVER PLANTING (Carporabrus glaucescens 'CAR10' Aussie Rambler) @ 0.5m spacing
- MASS PLANTING (Dianella caerulea 'DCNCO' Breeze) @ 0.5m spacing
- GROUNDCOVER PLANTING (Gardenia augusta 'KEN04' O So Fine) @ 0.4m spacing
- GROUNDCOVER PLANTING (check spacing) (Liriope muscari 'LIR1' Just Right) @ 0.4m spacing
- GROUNDCOVER PLANTING (Myoporum parvifolium 'PARV01' Yareena) @ 0.5m spacing
- MASS PLANTING (Philodendron 'Xanadu') @ 0.4m spacing
- GROUNDCOVER PLANTING (Viola hederacea) @ 0.5m spacing

building A- level 11



isthmus pty ltd	ACN 107362149
21 Central Avenue	Como 2226
Ph+612 9528 4903	www.isthmus.com.au
Email:landscape@isthmus.com.au	

REV:	AMENDMENT:	INT:	DATE:	LANDSCAPE PLAN - BUILDINGS A & B		DWG: IS0268DA7
				BUILDING A - LEVEL 11		ISSUE: B
				CHAPEL STREET PRECINCT, ROCKDALE 2216		
B	AUTHORITY APPROVAL	MW	01.05.20	DATE:	MAY 2020	
A	AUTHORITY APPROVAL	MW	17.10.19	SCALE:	AS SHOWN	



Feature tree planting. Red Frangipani. Min soil depth 800mm.
Accent understorey plantings. Refer to schedule.

Active playground incl. wetpour softfall. Playground equipment as shown is indicative.

Perimeter screen shrub planting to 2m. Groundcover planting under. Min soil depth 600mm.

External lighting to be provided the form of bollards, recessed luminaires, up lighting and wall mounted luminaires.

Feature tree planting. Crepe Myrtle. Min soil depth 800mm.
Mixed Kangaroo Paw understorey mass plantings. Refer to schedule.

'All weather' shade structures to BBQ areas.
To match with external architectural finishes.

Feature tree planting. Magnolia 'Little Gem'. Min soil depth 800mm.
Mixed Kangaroo Paw understorey mass plantings. Refer to schedule.

External furniture as shown is indicative

Community garden area. Raised 'vegetable garden' beds. Configuration to allow for appropriate circulation around planters for use. Facilities will be provided for storage of garden tools and equipment.

Balustrade to 1.6m to the perimeter of communal rooftop areas. Balustrading to provide wind mitigation and control access. To architects detail.

Feature tree planting. Citrus sp. Min soil depth 800mm.
Mixed Kangaroo Paw understorey mass plantings. Refer to schedule.

Various external hardstand finishes proposed to delineate outdoor spaces.

Raised deck seating 'booth' to allow for small & private outdoor space.

Automatic irrigation to be provided to all garden areas.

2 STOREY
BRICK BUILDING
(METAL ROOF)

Planter wall to include seating.

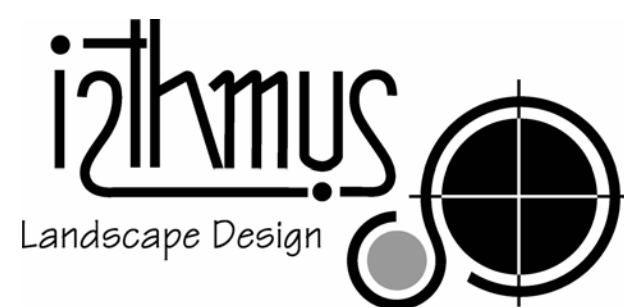
Feature tree planting. Red Frangipani. Min soil depth 800mm.
Accent understorey plantings. Refer to schedule.

Steel tree rings provided to tree planting. Ring dia varies.

Understorey planting of Gardenia 'O So Fine'.

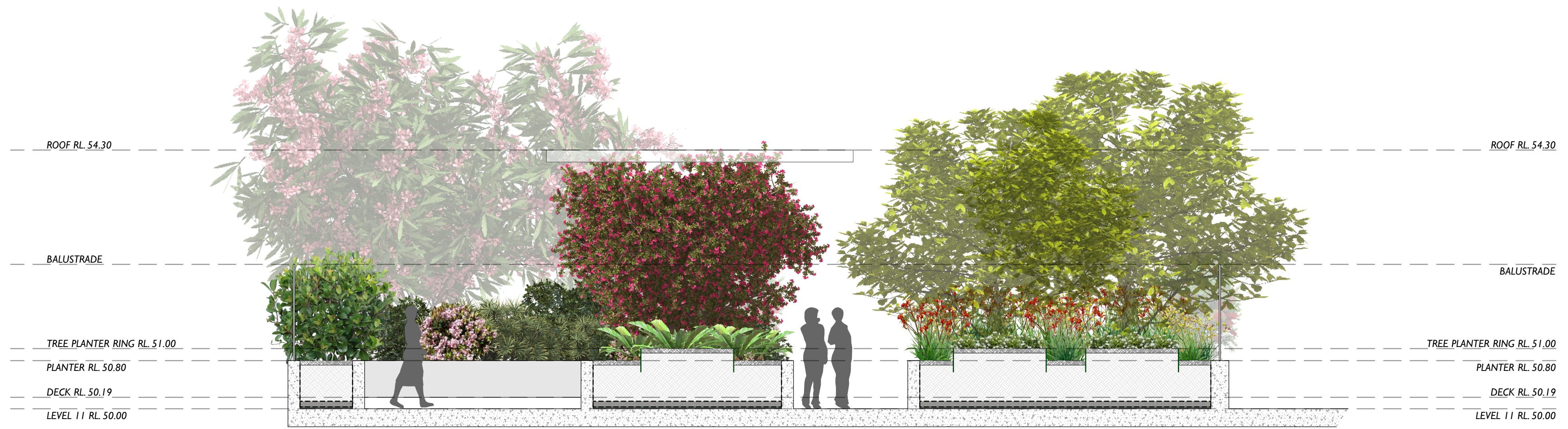
KEY	
EXISTING LEVELS	EXISTING TREE TO BE RETAINED
PROPOSED LEVELS	EXISTING STRUCTURES TO BE REMOVED
EXTENT OF BASEMENT UNDER	TILES TO PRIVATE OPEN SPACE (REFER TO DETAIL 1)
TILES TO COMMON ROOFTOP OPEN SPACE (REFER TO DETAIL 1)	PAVING TO MATCH PUBLIC DOMAIN PAVING TYPE P4 (TO ENG. DETAIL)
DECKING TO COMMON ROOFTOP OPEN SPACE (TO ARCH DETAIL)	TILES TO GROUND FLOOR COMMON ACCESS (REFER TO DETAIL 1)
TILES TO COMMON ROOFTOP OPEN SPACE (REFER TO DETAIL 1)	EXPOSED AGGREGATE CONCRETE PAVING TO SECONDARY GROUND FLOOR ACCESS (REFER TO DETAIL 2)
TILES TO COMMON ROOFTOP VEGE GARDENS (REFER TO DETAIL 1)	EXTENT OF ACTIVE PLAYGROUND (SOFTFALL FINISH BY OTHERS)
SEATING (450MM HIGH) (TO ARCH & ENG. DETAILS)	SEATING WALL (450MM HIGH) (TO ARCH & ENG. DETAILS)
PLANTER WALLS TO MATCH WITH BUILDING (min. soil depth 800mm) (TO ENG. DETAILS)	PLANTER WALLS TO MATCH WITH BUILDING (min. soil depth 600mm) (TO ENG. DETAILS)
PLANTER WALLS TO MATCH WITH BUILDING (min. soil depth 300mm) (TO ENG. DETAILS)	SHADE STRUCTURE OVER (TO ARCH & ENG. DETAILS)
MASS PLANTING (Anigozanthos sp.) @ 0.25m spacing	GROUNDCOVER PLANTING (Carpopetrus glaucescens 'CARIO' Aussie Rambler) @ 0.5m spacing
MASS PLANTING (Dianella caerulea 'DCNCO' Breeze) @ 0.5m spacing	GROUNDCOVER PLANTING (Gardenia augusta 'KENO4' O So Fine) @ 0.4m spacing
GROUNDCOVER PLANTING (check spacing) (Liriope muscari 'LIRJ' Just Right) @ 0.4m spacing	GROUNDCOVER PLANTING (Myoporum parvifolium 'PARV01' Yareena) @ 0.5m spacing
MASS PLANTING (Philodendron 'Xanadu') @ 0.4m spacing	GROUNDCOVER PLANTING (Viola hederacea) @ 0.5m spacing

building B-level 10

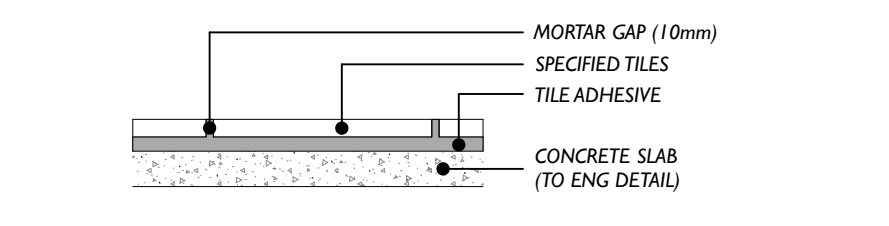


isthmus pty ltd	ACN 107362149
21 Central Avenue	Como 2226
Ph:+612 9528 4903	www.isthmus.com.au
Email:landscape@isthmus.com.au	

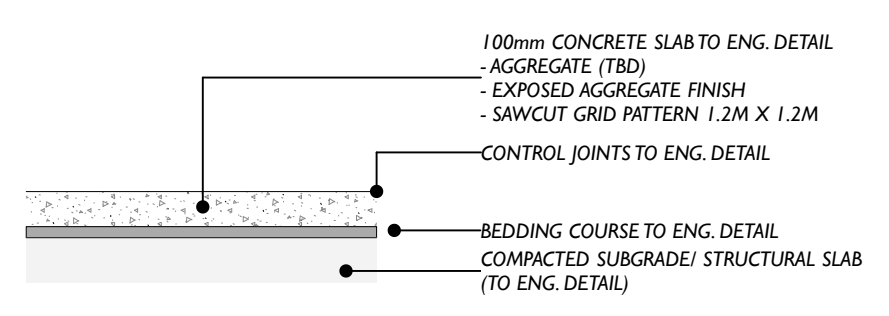
REV.	AMENDMENT:	INT.	DATE:	LANDSCAPE PLAN - BUILDINGS A & B		DWG: IS0268DA8
				BUILDING B - LEVEL 10		ISSUE: B
				CHapel Street Precinct, Rockdale 2216		
B	AUTHORITY APPROVAL	MW	01.05.20	DATE:	MAY 2020	
A	AUTHORITY APPROVAL	MW	17.10.19	SCALE:	1:100@A1 - 1:200@A3	



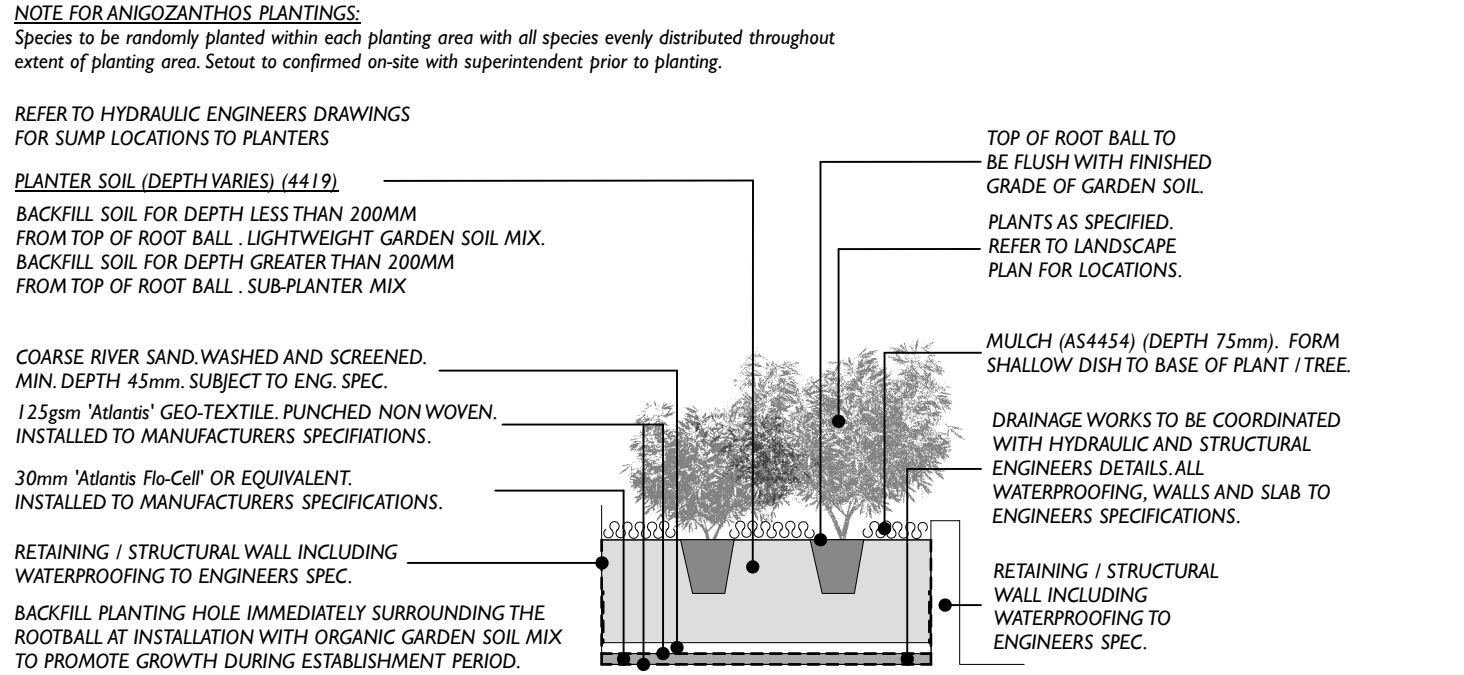
SECTION AA (ROOFTOPTYPICAL) 1:50



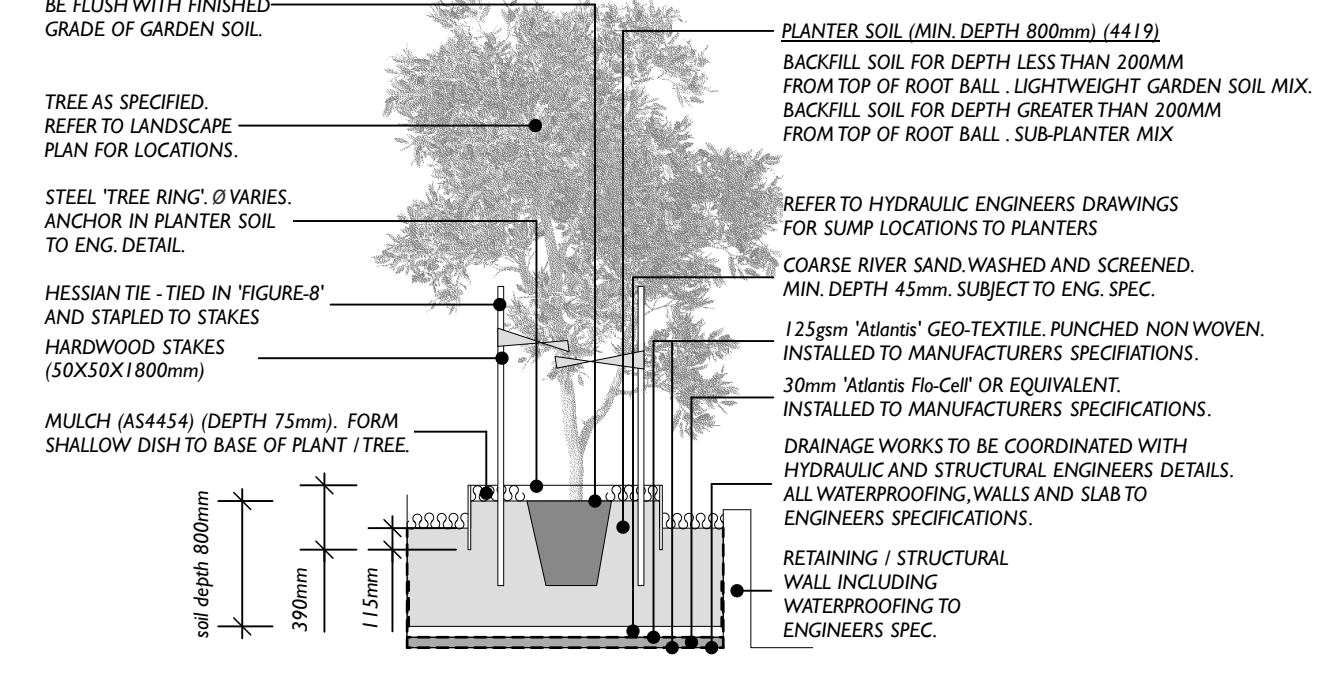
1. TILING TO CONCRETE SLAB NTS NOT FOR CONSTRUCTION



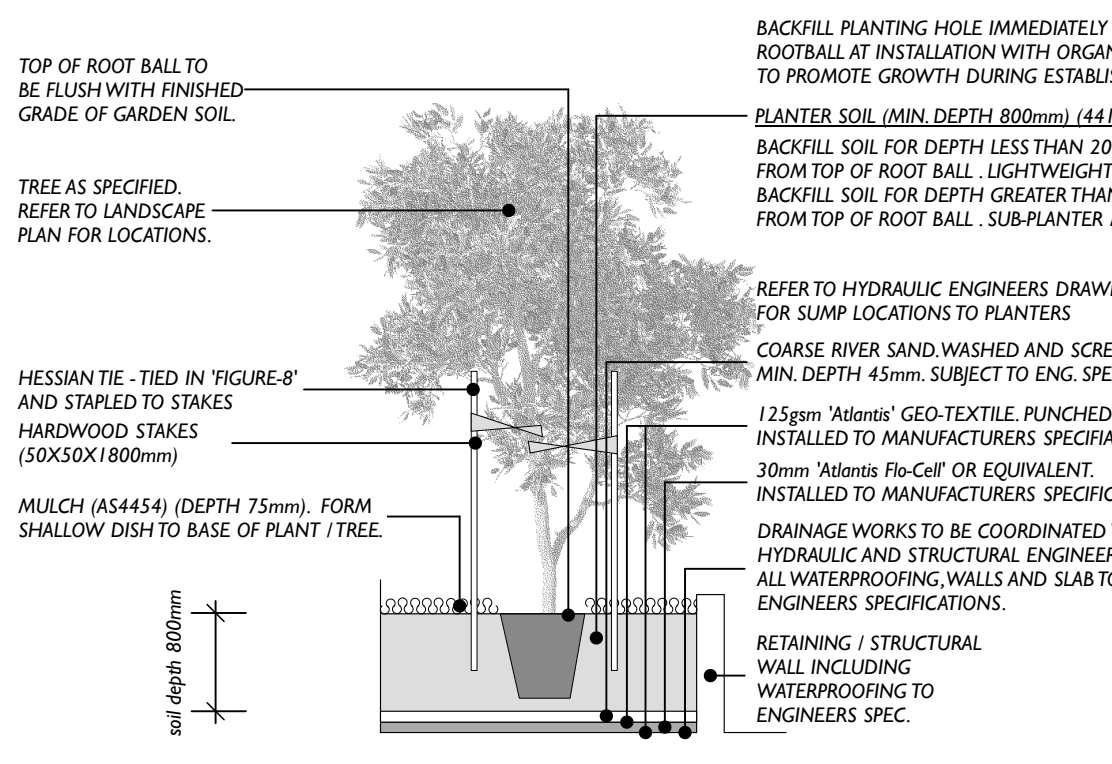
2. EXPOSED AGGREGATE CONCRETE PAVING NTS NOT FOR CONSTRUCTION



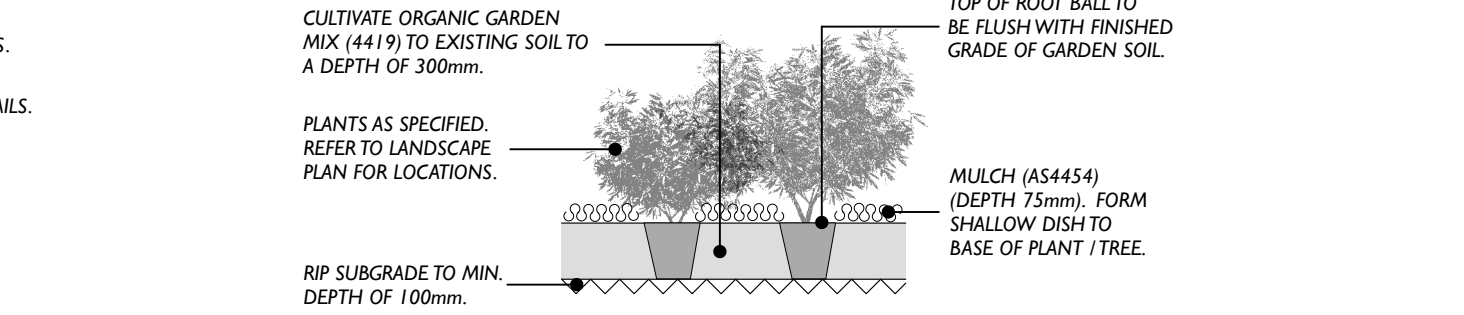
3. ON STRUCTURE SHRUB, G.COVER & ACCENT PLANTING NTS NOT FOR CONSTRUCTION



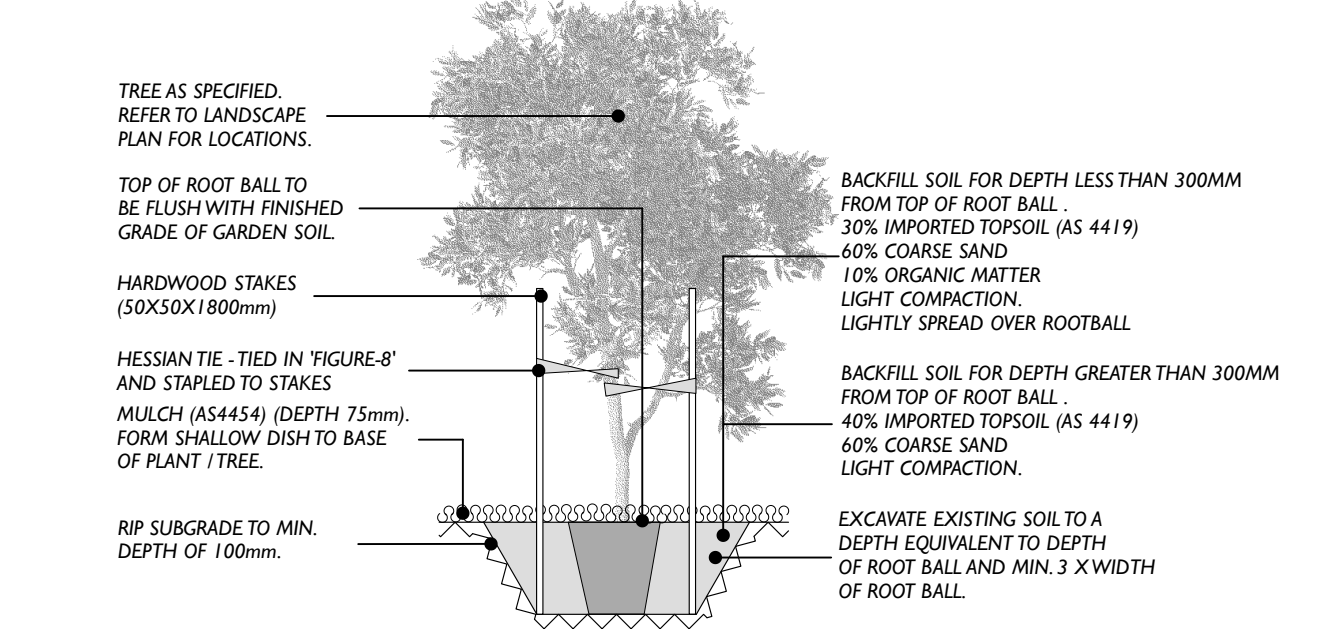
4. ON STRUCTURE TREE PLANTING - ROOFTOP NTS NOT FOR CONSTRUCTION



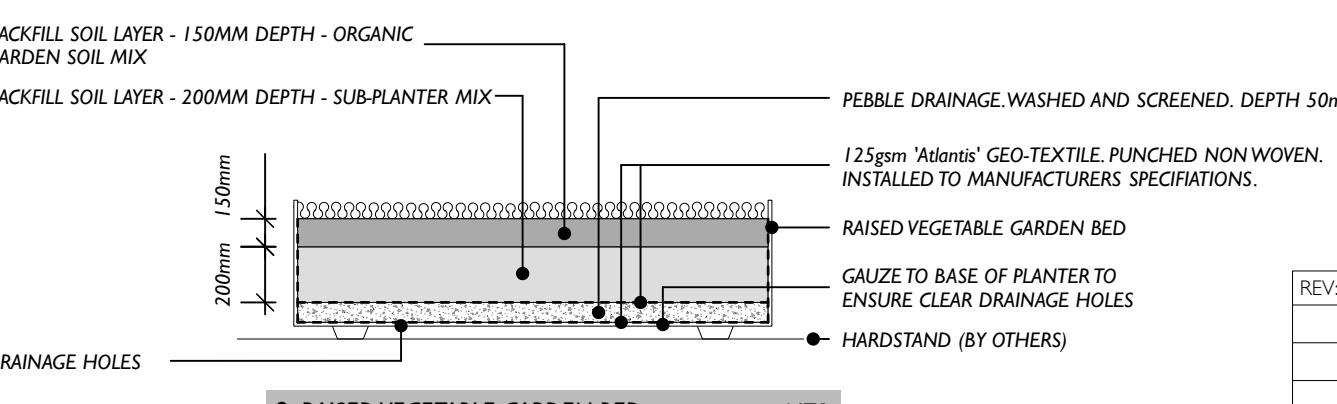
5. ON STRUCTURE TREE PLANTING - GROUND FLOOR NTS NOT FOR CONSTRUCTION



6. DEEP SOIL GARDEN BED PLANTING NTS NOT FOR CONSTRUCTION



7. DEEP SOIL TREE PLANTING NTS NOT FOR CONSTRUCTION



8. RAISED VEGETABLE GARDEN BED NTS NOT FOR CONSTRUCTION

MAINTENANCE SPECIFICATION

Maintenance shall apply to all soft landscape materials installed as per landscape plan IS0268DA1-8 and as accepted by Bayside Council including street tree planting. Maintenance of softworks shall be for a minimum of 52 weeks after practical completion.

Minimum recurrent maintenance shall be as per schedule and consist but not be limited to the following works:

- Water all plants twice per week or as necessary to ensure maximum plant growth. For the first 8 weeks from establishment maintain moisture to a depth of 100mm.
- Apply appropriate weed control sprays where necessary.
- Regularly cultivate to ensure water penetration to plants and to keep the area in a neat and tidy condition. Re-mulch as necessary to all mass planted areas.
- Spray to control pests and diseases.
- Apply organic slow release fertilizer to garden areas at 3 monthly intervals through spring and summer. Organic liquid fertilizer to be applied throughout spring & summer as required.
- Replace plants which fail with plants of a similar size and quality as originally specified (at contractors cost), prior to next inspection.
- Report any incidence of plants stolen or destroyed by vandalism. Replace as requested.
- Adjust stakes and ties to plants as necessary. Ensure strangulation of plants does not occur.
- Prune and shape plants as required. Shrub plantings to site boundaries are to be pruned to allow for access where required.
- Defects of faults arising out of defective workmanship are to be made good.
- Irrigation system and components are to be inspected at regular intervals to ensure correct operation. Minor repairs are to be undertaken to components. System failures are to be reported to body corporate representative for action.
- A final inspection shall be made by the landscape architect at the conclusion of the 52 week maintenance period. Any items requiring rectification shall be repaired to satisfaction of the Landscape Architect.

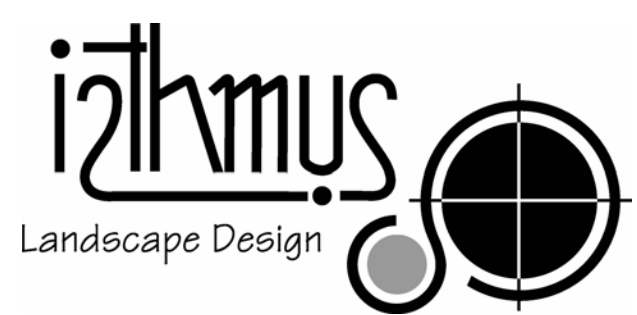
PLANT SCHEDULE

BOTANICAL NAME	COMMON NAME	MATURE HEIGHT (M)	MATURE SPREAD (M)	QUANTITY	SIZE	STAKING	YES
<i>Hu Arbutus x andrachnoides</i>	Hybrid Strawberry Tree	5 - 10m	6 - 8m	1	75L		YES
<i>Au Arbutus unedo</i>	Strawberry tree	4 - 6m	4 - 6m	2	75L		YES
<i>Cw Ceratopetalum apetalum</i>	Coachwood	15 - 20m	3.5 - 5m	1	100L		YES
<i>Ci Citrus x meyeri</i>	Meyer lemon	2 - 3m	2.0 - 3.5m	1	100L		YES
<i>Ec Elaeocarpus reticulatus</i>	Blueberry Ash	6 - 10m	6 - 10m	8	100L		YES
<i>Fr Plumeria rubra</i>	Red Frangipani	5 - 10m	6 - 10m	4	100L		YES
<i>Go Gloriosa rostrata</i>	Cheese Tree	5 - 10m	6 - 10m	2	100L		YES
<i>Hf Hymenosporum flavum</i>	Native frangipani	5 - 10m	0.3 - 0.6m	2	100L		YES
<i>Li Lagerstroemia indica 'Tuscarora'</i>	Tuscarora Crepe Myrtle	5 - 10m	3.5 - 6m	4	100L		YES
<i>Mf Magnolia grandiflora 'Little Gem'</i>	Little Gem Southern Magnolia	3 - 5m	2.0 - 3.5m	6	100L		YES
<i>Ra Randia fitzalanii</i>	Native Gardenia	3 - 5m	2.0 - 3.5m	4	75L		YES
<i>be Buxus microphylla</i>	Japanese Box	1.5 - 3m	1.2 - 2.0m	20	25L		NO
<i>bc Callistemon viminalis 'LJ1' Better John</i>	Better John	0.6 - 1.2m	0.6 - 0.9m	31	25L		YES
<i>bc Callistemon viminalis 'LCO1' Macarthur</i>	Macarthur	1.8m	1.5m	33	25L		YES
<i>mt Metrosideros 'Tahiti'</i>	New Zealand Christmas Bush	0.75 - 0.9m	0.6 - 0.9m	53	15L		YES
<i>mp Murraya paniculata</i>	Orange Jessamine	1.5 - 3m	3.5 - 6m	16	15L		YES
<i>ps Pittosporum tobira 'Miss Muffett'</i>	Pittosporum 'Miss Muffett'	0.5m	0.5m	33	15L		NO
<i>ri Rhaphiolepis indica 'RAPHO1' Cosmic White</i>	Cosmic White	1.5 - 2.0m	1.5m	18	15L		NO
<i>si Syzygium australe 'Aussie Boomer'</i>	Lilly Pilly	1.5 - 2m	0.8 - 1.2m	18	25L		YES
<i>sp Syzygium australe 'Resilience'</i>	Lilly Pilly	3m	1.5m	28	25L		YES
<i>st Syzygium australe 'Tiny Trev'</i>	Lilly Pilly	0.5 - 1.2m	0.3 - 0.7m	85	25L		NO
<i>vb Viburnum odoratissimum 'VOCI' Accents</i>	Dense Fence	2.5m	2m	149	25L		YES
<i>ay Agave attenuata</i>	Lions Tail	0.6 - 0.75m	0.6 - 0.9m	7	25L		N/A
<i>at Alpina caerulea 'Red Back'</i>	Native Ginger	0.9 - 1.5m	0.9 - 1.2m	23	15L		N/A
<i>aq Alpina zerumbet cv 'Green Shell'</i>	Green Shell Ginger	0.9 - 1.5m	0.9 - 1.2m	10	15L		N/A
<i>zt Alpina mutica</i>	False Cardamom Ginger	0.6 - 0.75m	0.6 - 0.75m	49	5L		N/A
<i>an Anigozanthos 'Amber Velvet'</i>	Kangaroo Paw	0.5m	0.4m	55	150mm		N/A
<i>an Anigozanthos 'Gold Velvet'</i>	Kangaroo Paw	0.4 - 0.5m	0.4m	55	150mm		N/A
<i>an Anigozanthos 'Ruby Velvet'</i>	Kangaroo Paw	0.4m	0.3m	55	150mm		N/A
<i>ae Asplenium nidus</i>	Bird's-Nest Fern	0.9 - 1.5m	2.0 - 3.5m	7	15L		N/A
<i>bx Bambusa textilis var. gracilis</i>	Slender Weavers Bamboo	3 - 5m	2.0 - 3.5m	2	45L		YES
<i>de Doryanthes excelsa</i>	Gymea Lily, Giant Lily	1.5 - 3m	1.2 - 2.0m	12	25L		N/A
<i>dz Doryanthes palmeri</i>	Spear Lily	2 - 2.5m	1.5 - 2.0m	11	25L		N/A
<i>gp Gigantochloa wrayi</i>	Malaysian Bamboo	5 - 10m	1.2 - 2.0m	2	45L		YES
<i>hw Heliconia pendula cv 'Red waxy'</i>	False Bird of Paradise	2.5 - 3m	1 - 2m	17	45L		N/A
<i>za Zamia furfuracea</i>	Cardboard Palm	0.9 - 1.5m	0.9 - 1.2m	33	15L		N/A
<i>Carpobrotus glaucescens 'CARI0' Aussie Rambler</i>	Pig Face	0.2m	2m	142	100mm		N/A
<i>Dianella caerulea 'DCNCO' Breeze</i>	Flax Lily	0.3 - 0.4m	0.5m	410	100mm		N/A
<i>Gardenia augusta 'KENO4' O So Fine</i>	O So Fine	0.3m	1m	260	100mm		N/A
<i>Liriodendron 'LIRJ' Just Right</i>	Just Right	0.5m	0.5m	120	100mm		N/A
<i>Myoporum parvifolium 'PARVO1' Yareena</i>	Myoporum	0.1m	1m	322	100mm		N/A
<i>Philodendron 'Xanadu'</i>	Philodendron	0.75 - 0.9m	0.9 - 1.2m	463	100mm		N/A
<i>Viola hederacea</i>	Native Violet	0.1	0.3 - 0.7m	268	TUBE		N/A

MAINTENANCE SCHEDULE

	December-February	March-May	June-August	September-November
WATERING				
Turf	n/a	n/a	n/a	n/a
Garden Areas	Twice weekly	Weekly	As required	Weekly
WEED CONTROL				
Turf	n/a	n/a	n/a	n/a
Garden Areas	Fornightly	As required	As required	Fornightly
PEST CONTROL				
Turf	n/a	n/a	n/a	n/a
Garden Areas	Monthly	As required	As required	Quarterly
FERTILISING				
Turf	n/a	n/a	n/a	n/a
Garden Areas	Quarterly			Quarterly
PRUNING				
Garden Areas	Weekly	As required	As required	Fornightly
TOP DRESSING (Annually)				
Turf	n/a	n/a	n/a	n/a
MOWING				
Turf	n/a	n/a	n/a	n/a
MULCHING (annually)	Weekly	As required	As required	Fornightly
Garden Areas				October

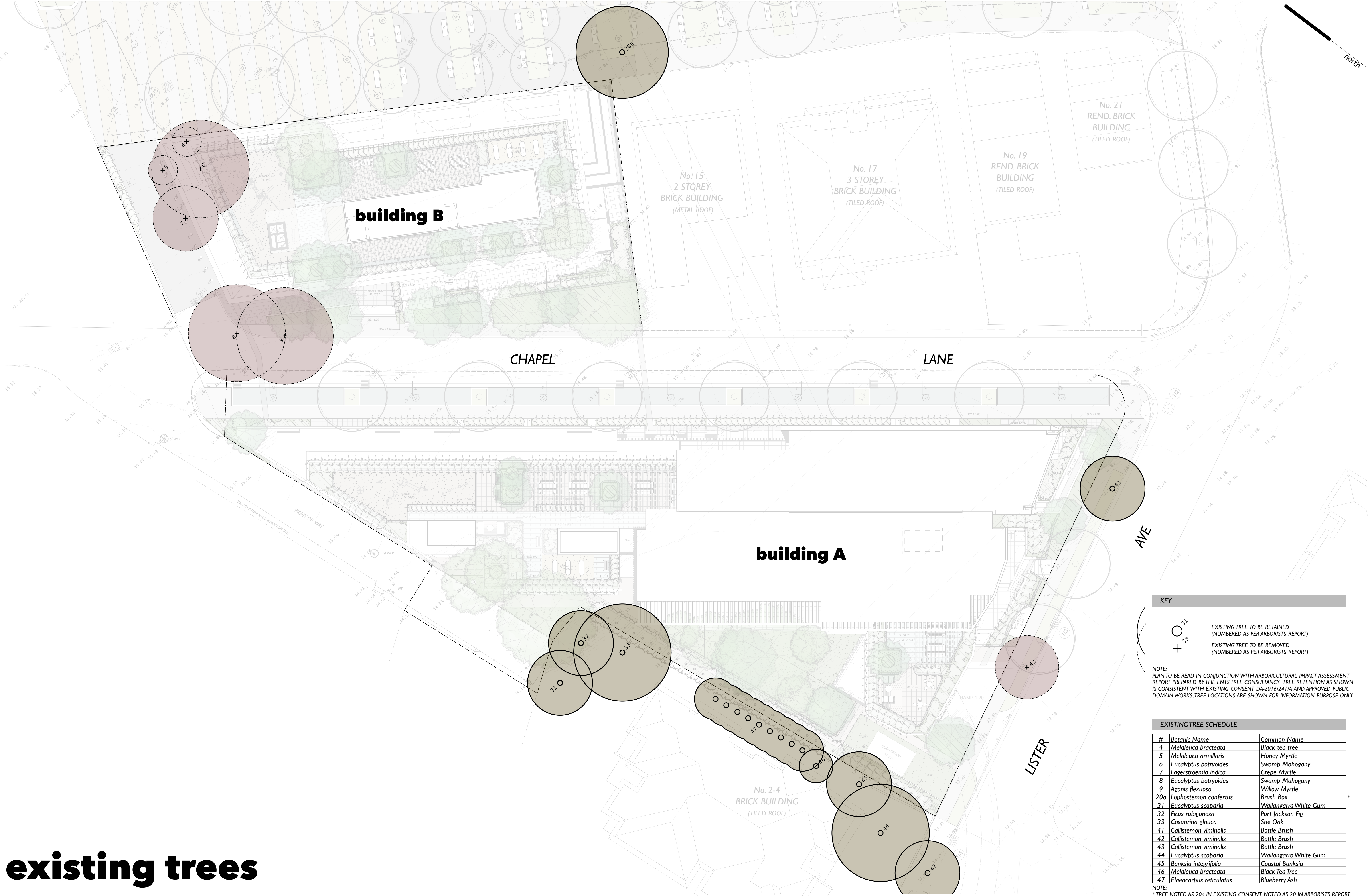
DETAILS & SCHEDULES



isthmus pty ltd	ACN 107362149
21 Central Avenue	Como 2226
Ph:+612 9528 4903	www.isthmus.com.au
Email:landscape@isthmus.com.au	

REV.	AMENDMENT:	INT.	DATE:
B	AUTHORITY APPROVAL	MW	01.05.20
A	AUTHORITY APPROVAL	MW	17.10.19

LANDSCAPE PLAN - BUILDINGS A & B
 DWG: IS0268DA9
 ISSUE: B
 CHAPEL STREET PRECINCT, ROCKDALE 2216
 DATE: MAY 2020
 SCALE: AS SHOWN



KEY

○ 31
+ 39

EXISTING TREE TO BE RETAINED
(NUMBERED AS PER ARBORISTS REPORT)

EXISTING TREE TO BE REMOVED
(NUMBERED AS PER ARBORISTS REPORT)

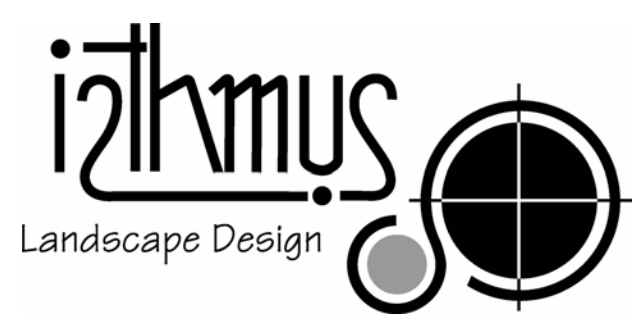
NOTE:
PLAN TO BE READ IN CONJUNCTION WITH ARBORICULTURAL IMPACT ASSESSMENT REPORT PREPARED BY THE ENTS TREE CONSULTANCY. TREE RETENTION AS SHOWN IS CONSISTENT WITH EXISTING CONSENT DA-2016/241/A AND APPROVED PUBLIC DOMAIN WORKS. TREE LOCATIONS ARE SHOWN FOR INFORMATION PURPOSE ONLY.

EXISTING TREE SCHEDULE

#	Botanic Name	Common Name
4	<i>Melaleuca bracteata</i>	Black tea tree
5	<i>Melaleuca armillaris</i>	Honey Myrtle
6	<i>Eucalyptus botryoides</i>	Swamp Mahogany
7	<i>Lagerstroemia indica</i>	Crepe Myrtle
8	<i>Eucalyptus botryoides</i>	Swamp Mahogany
9	<i>Azonia flexuosa</i>	Willow Myrtle
20a	<i>Lophostemon confertus</i>	Brush Box
31	<i>Eucalyptus scobaria</i>	Wallangarra White Gum
32	<i>Ficus rubiginosa</i>	Port Jackson Fig
33	<i>Casuarina glauca</i>	She Oak
41	<i>Callistemon viminalis</i>	Bottle Brush
42	<i>Callistemon viminalis</i>	Bottle Brush
43	<i>Callistemon viminalis</i>	Bottle Brush
44	<i>Eucalyptus scobaria</i>	Wallangarra White Gum
45	<i>Banksia integrifolia</i>	Coastal Banksia
46	<i>Melaleuca bracteata</i>	Black Tea Tree
47	<i>Elaeocarpus reticulatus</i>	Blueberry Ash

NOTE:
*TREE NOTED AS 20a IN EXISTING CONSENT. NOTED AS 20 IN ARBORISTS REPORT.

existing trees



isthmus pty ltd ACN 107362149
 21 Central Avenue Como 2226
 Ph: +612 9528 4903 www.isthmus.com.au
 Email: landscape@isthmus.com.au

REV.	AMENDMENT:	INT.	DATE
B	AUTHORITY APPROVAL	MW	01.05.20
A	AUTHORITY APPROVAL	MW	17.10.19

LANDSCAPE PLAN - BUILDINGS A & B DWG: IS0268DA10
 ISSUE: B

EXISTING TREES CHAPEL STREET PRECINCT, ROCKDALE 2216

DATE: MAY 2020
 SCALE: 1:200@A1 - 1:400@A3